



Friday, January 7th, 2022

Dear Carson Graham Community,

Carson staff have been busy this week reviewing current safety measures and implementing enhanced safety measures, as well as planning and preparing for the continuation of teaching and learning for the remainder of the school year.

We are very much looking forward to having students back in the building on Monday and would like to let the Carson community know in advance of student arrival what can be expected. Below you will find a review of existing and additional universal preventive measures, as well as information that is specific to the Carson building. Note that classroom teachers will also be reviewing these points with students during Monday morning and afternoon classes.

Of additional note for next week is the change in Wednesday's schedule and the Professional Development Day on Friday. There will no longer be a late start for students on January 12th. In an attempt to maximize instructional time, the Staff Collaboration that was originally scheduled for that day was moved to this week.

Existing Preventative Measures

- To [get fully vaccinated](#), if eligible to do so.
- To do a [daily health check](#) and stay home when feeling sick. Please continue to report absences to 604-903-3555 to ensure accurate attendance reporting.
- To [wear a mask in all indoor areas](#). Although we encourage everyone to come to school with a well-fitted mask and to keep a spare on hand, we have a supply of disposable masks in the main office.
- To practice good personal hygiene, including frequent handwashing. All classrooms have a bottle of hand sanitizer that staff and students are encouraged to use.
- To respect the personal space of others and maximize the use of available learning spaces, including taking students and learning outside, where and when possible. We do ask that students dress in layers and be prepared to go outside.

Additional and Carson-Specific Preventative Measures

- Maximizing space between people and implementing strategies to prevent crowding during class transition and break times:
 - Students will be asked to use the building entrance and exit closest to their classroom when arriving at and leaving school (e.g. using the western most doors if their class is in the school E Wing). Please see map below.
 - Break times will be staggered to reduce crowding in the halls. Students will be asked to stay in the wing their classroom is located in during break time and not move throughout the school.





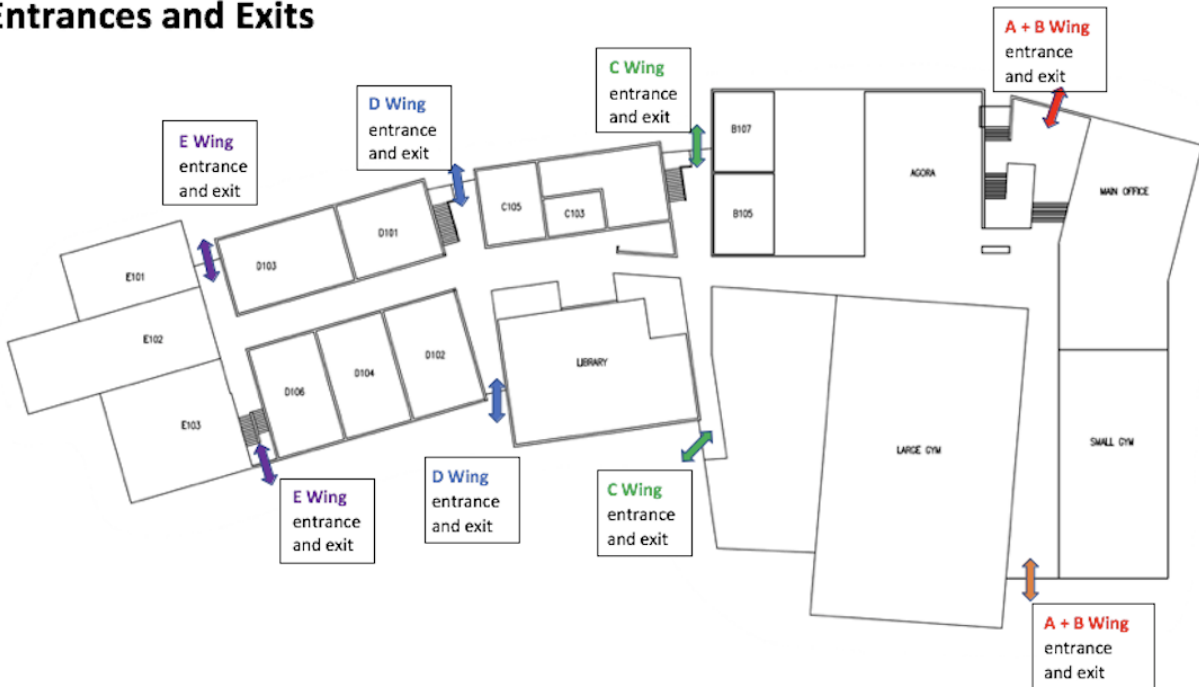
**CARSON GRAHAM
SECONDARY**

- There will be additional supervision in the hallways to remind students of measures.
 - Students are encouraged to leave the building if they do not have a scheduled class.
 - While eating or drinking, students are asked to go outside if time or weather permits. If eating outside is not possible, we ask that students distance themselves from others.
 - Access to the Library will be limited to those completing schoolwork or obtaining resources.
- Holding staff-only gatherings, meetings and pro-d activities, virtually.
 - Holding school gatherings and events, including assemblies, virtually. If gatherings and events must be held in person, the number of people in attendance cannot exceed 50% operating capacity and spectators cannot be present.
 - Limiting visitors and volunteers to those who are essential to supporting activities that are of direct benefit to student learning and well-being.
 - Pausing extra-curricular sports tournaments. At this time, athletic practices and one-team competitions can continue. However, and as noted above, spectators cannot be present.

Break Schedule	Break Group #1	10:20 – 10:30	1:40 – 1:50	Wing B and D
	Break Group #2	10:30 – 10:40	1:50 – 2:00	Wing A and E
	Break Group #3	10:40 – 10:50	2:00 – 2:10	Wing C

Breaks can be spent outside or in your wing. Use the closest bathroom.

Entrances and Exits





Parents and guardians, please help reinforce these messages with your children.

We are deeply grateful for your ongoing support. Should you have any questions, please contact me directly at sdohm@sd44.ca.

Sincerely,

A handwritten signature in blue ink, appearing to read 'S. Dohm'.

Suzette Dohm
Principal

