



New Elementary School in Cloverley Neighborhood

OCTOBER 24, 2023

Agenda



- Project Scope
- Schedule
- Enduring Principles and Design Input Process
- Renderings (subject to change)
- Future Planning Considerations
- Risks
- Questions

Project Scope



Maximum Potential Project cost \$64,394,754

- (Includes \$3 million school district contribution)
- Green House Gas reduction measures
- Mass Timber construction
- Neighbourhood Learning Centre

Capacity & Scope

- 60 Kindergarten
- 525 Elementary (1-7)
- English only (Single Track)

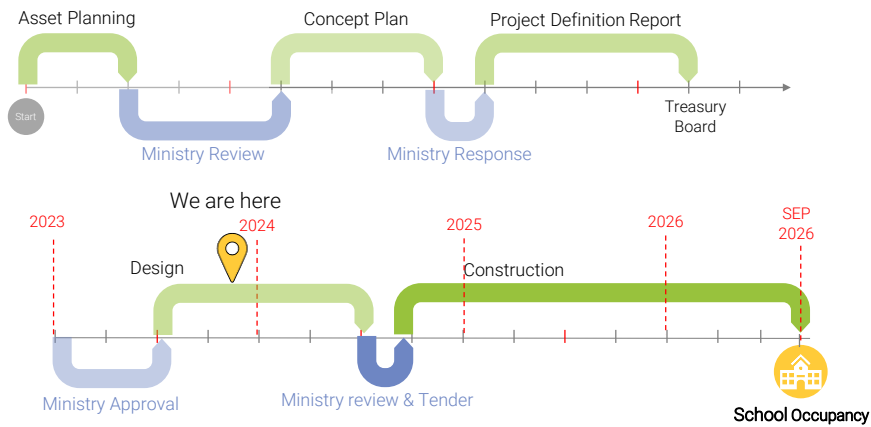
Neighbourhood Learning Centre (NLC)

- (Funded within Ministry funding)
- Two spaces with kitchen and storage
- School hours - Instructional use (music, etc.)
- Capacity for 50 before and after school care spaces

Childcare

- (Funded separately – application to BC ChildCare New Spaces Fund and CNV \$3.5 million contribution)
- Two dedicated spaces (37 childcare spaces)
- 12 infant / toddler
- 25 space for ages 30 - 60 months

Timeline



Schedule – Key Milestones



- Design Development – Due November 30, 2023
- Public Input – Anticipate end of November/early December
- Abatement and demolition of existing school - April 2024
- Permitting – May 2024
- Tender – June 2024
- Construction contract award – August 16, 2024
- Substantial completion – June 15, 2026
- Occupancy and furnishing – Summer 2026
- Final completion – August 17, 2026

Enduring Principles



School Design Principles

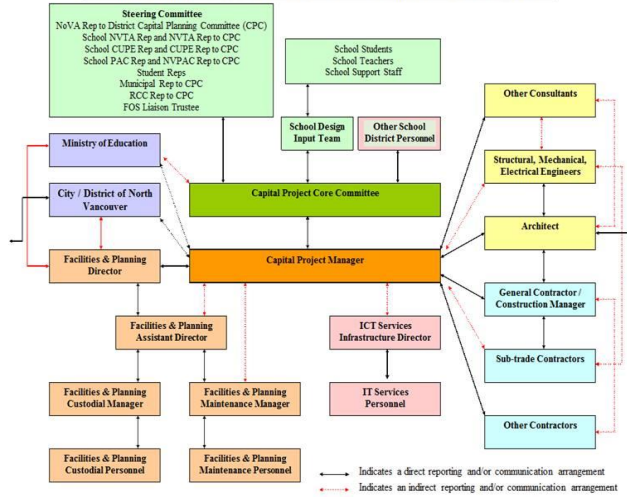
Five Pillars of Design

1. Maximum flexibility and adaptability for today and the future
2. Healthy, sustainable and accessible environment
3. School community connections
4. Connections to the wider community
5. Professional Support

Design Input Process



Channels of Communication for a North Vancouver School District Capital Project



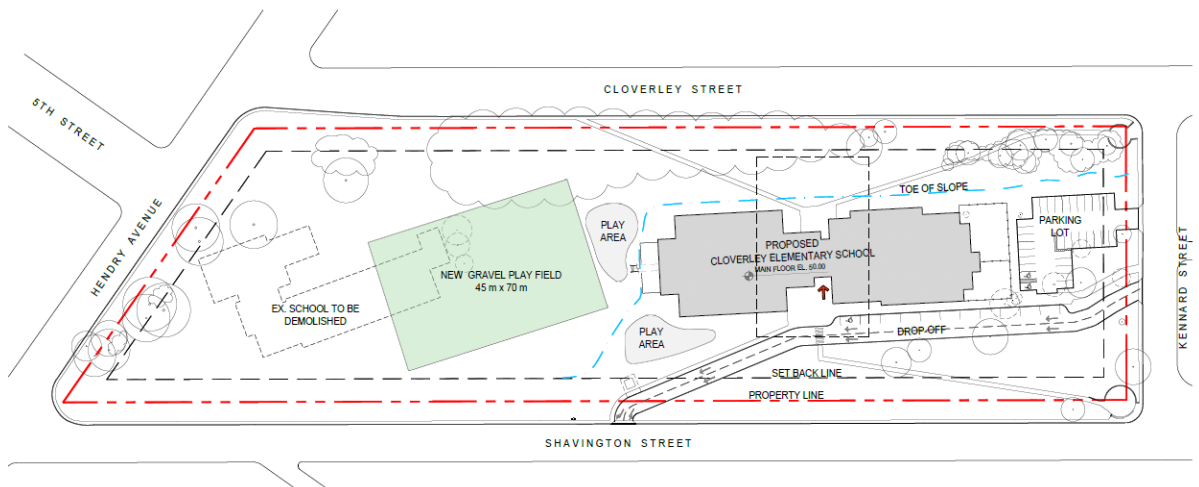
Existing Site



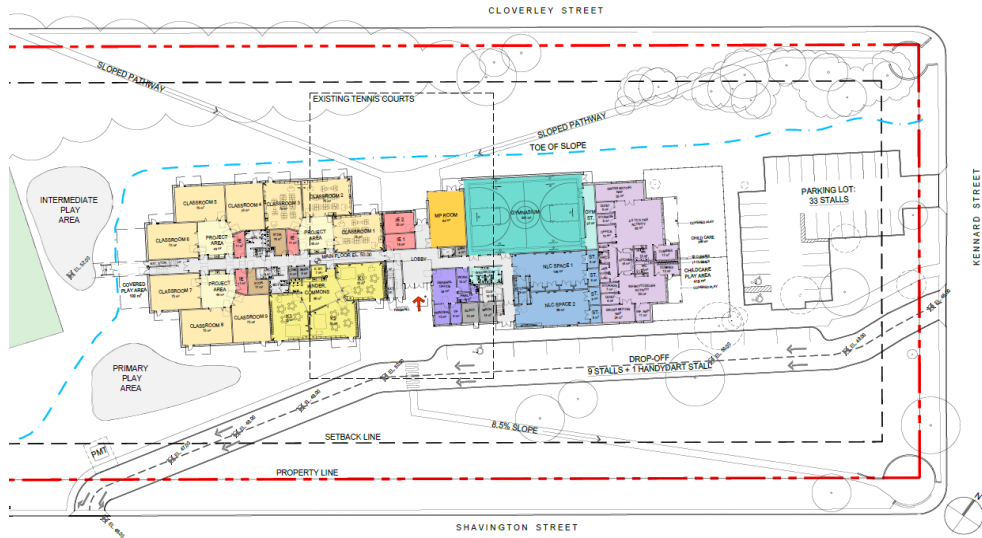
Topography



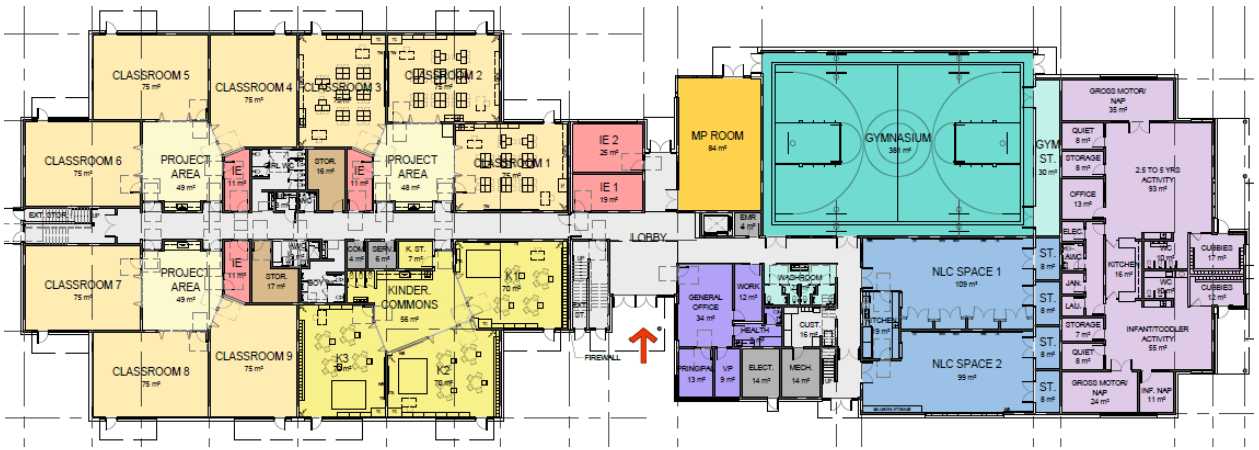
Proposed Site Plan



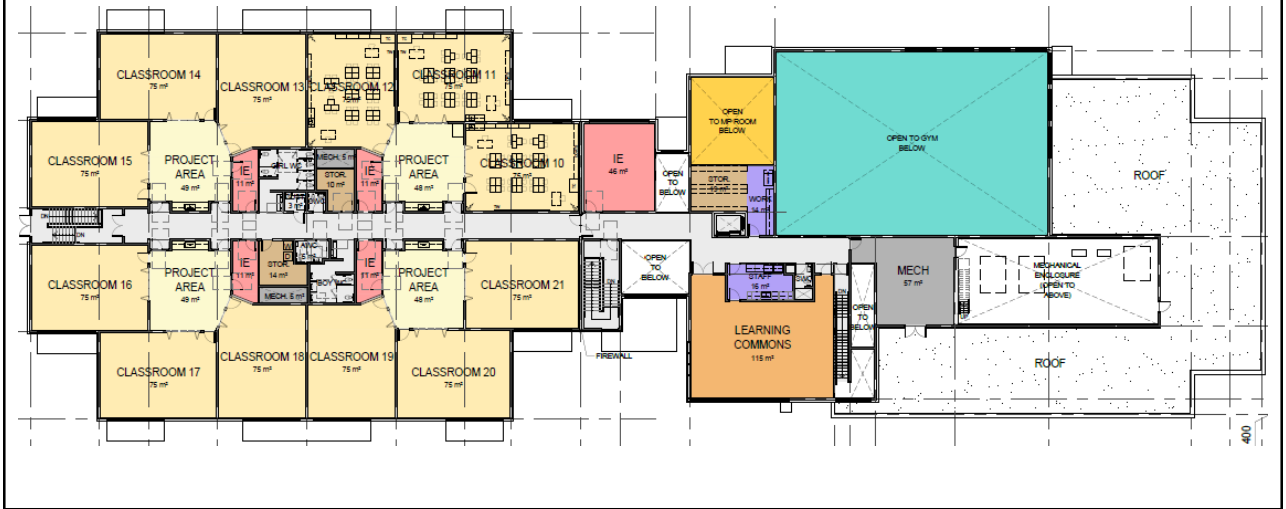
Proposed School Layout



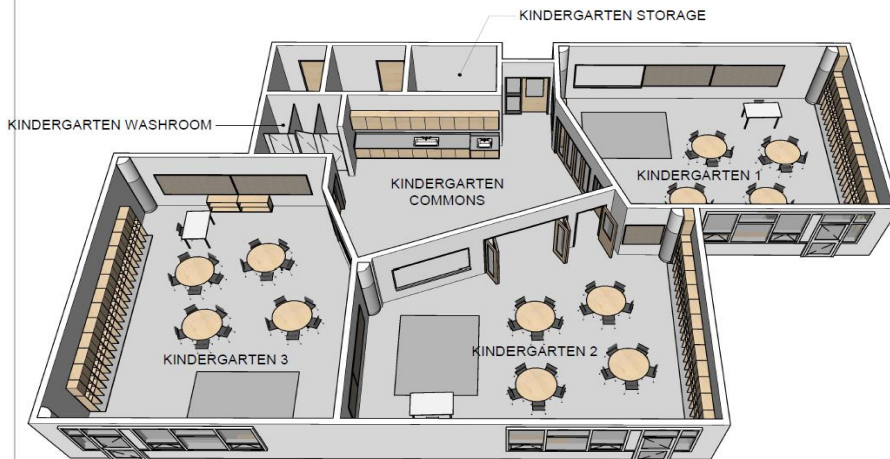
Proposed Floor Plan – Level 01



Proposed Floor Plan – Level 02

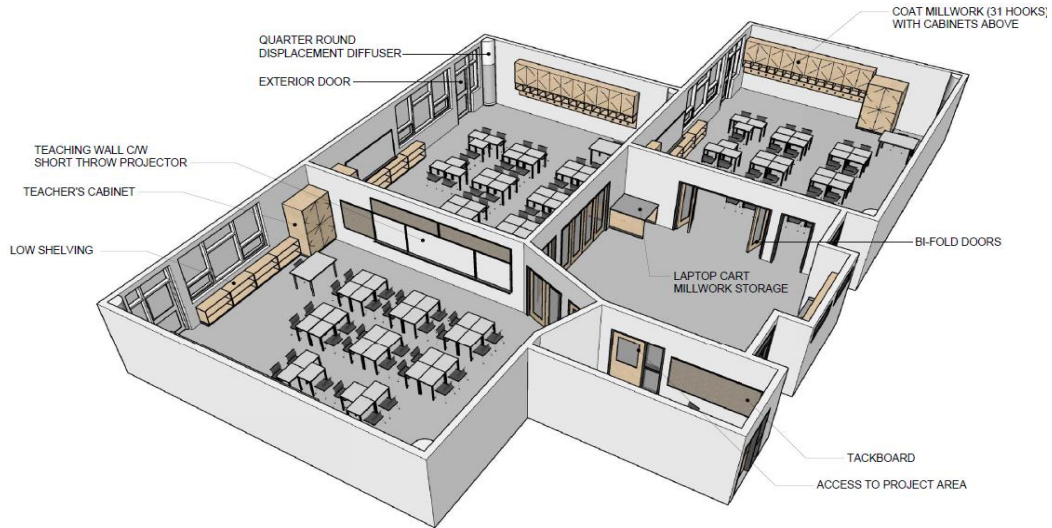


Proposed Kindergarten

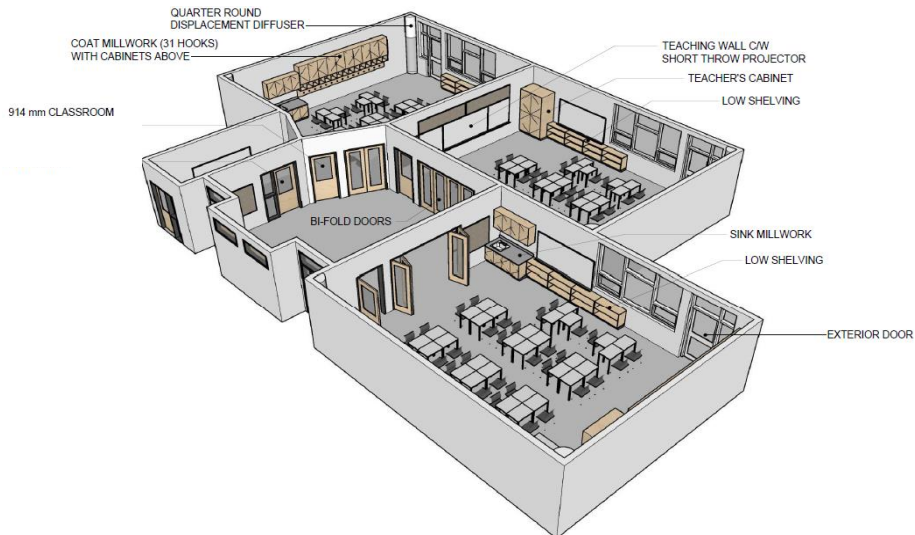


KINDERGARTEN CLUSTER

Proposed Level 1 – Classroom



Proposed Level 2 – Classroom



Perspective – Front Entry



Perspective – South East Corner



Perspective – South West Corner



Future Planning Considerations



- Name of school
- Catchment area
- Communications plan
- Transportation study
- Tennis courts / park space
- Landscaping (incl. replacement of unhealthy trees)

Risks



- Aggressive project schedule
- Geotechnical investigation
- Municipal process, approvals and permitting
 - *Mass timber different permitting review process*
 - *Offsite improvements*
- Design on budget
- Design on time
 - *New Building Code effective January 2024*
- Inflation / Construction escalation
 - *Funding sufficient for planned NLC and Childcare design area*



Questions?