

# The Process: Hearing From You

## Overview

During its land management process, the NVSD is committed to an open, transparent process.

While engagement has been underway since 2003, January 2014 marked the beginning of a community engagement process specifically for Cloverley. The 6-month engagement process is designed to:

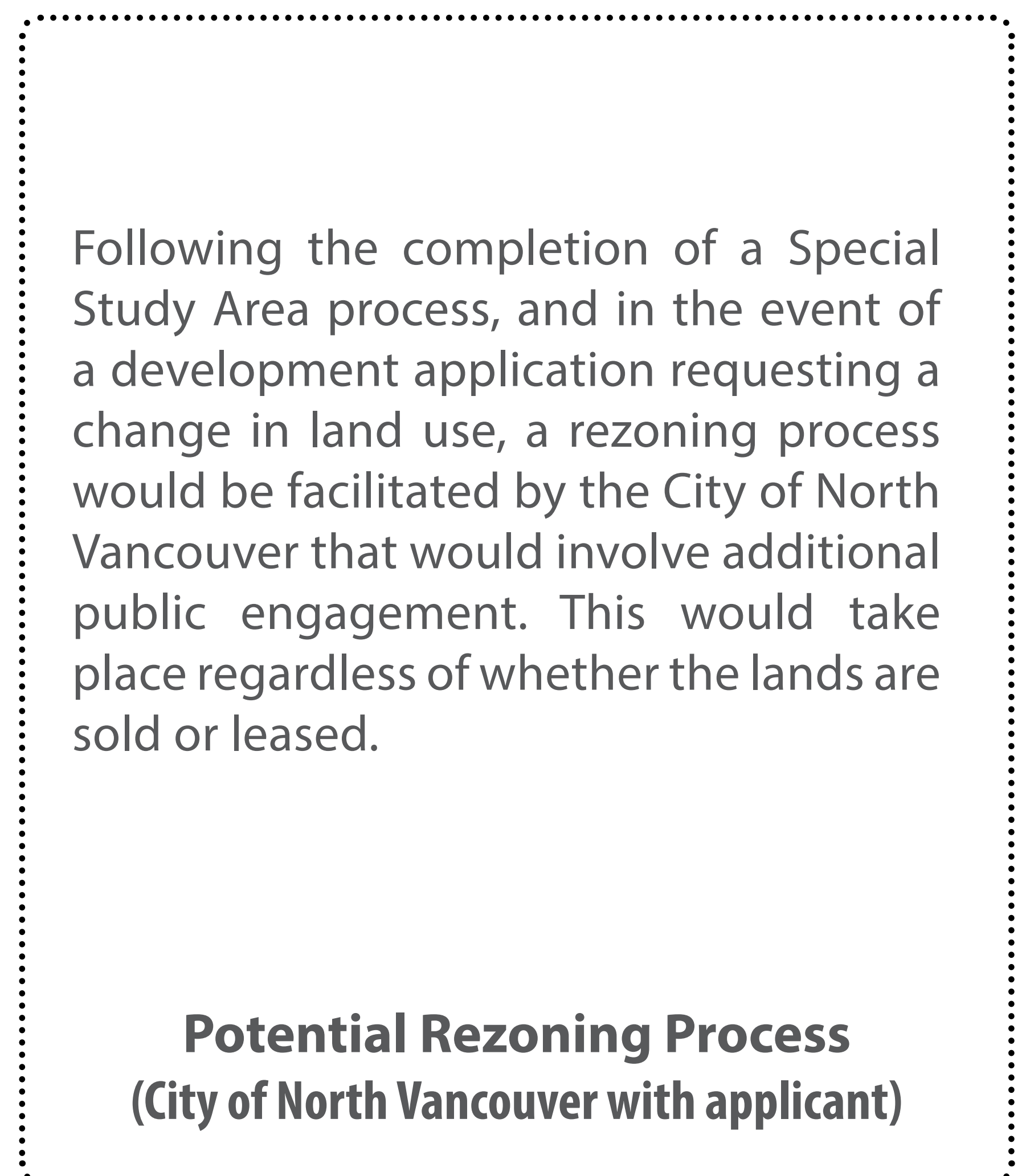
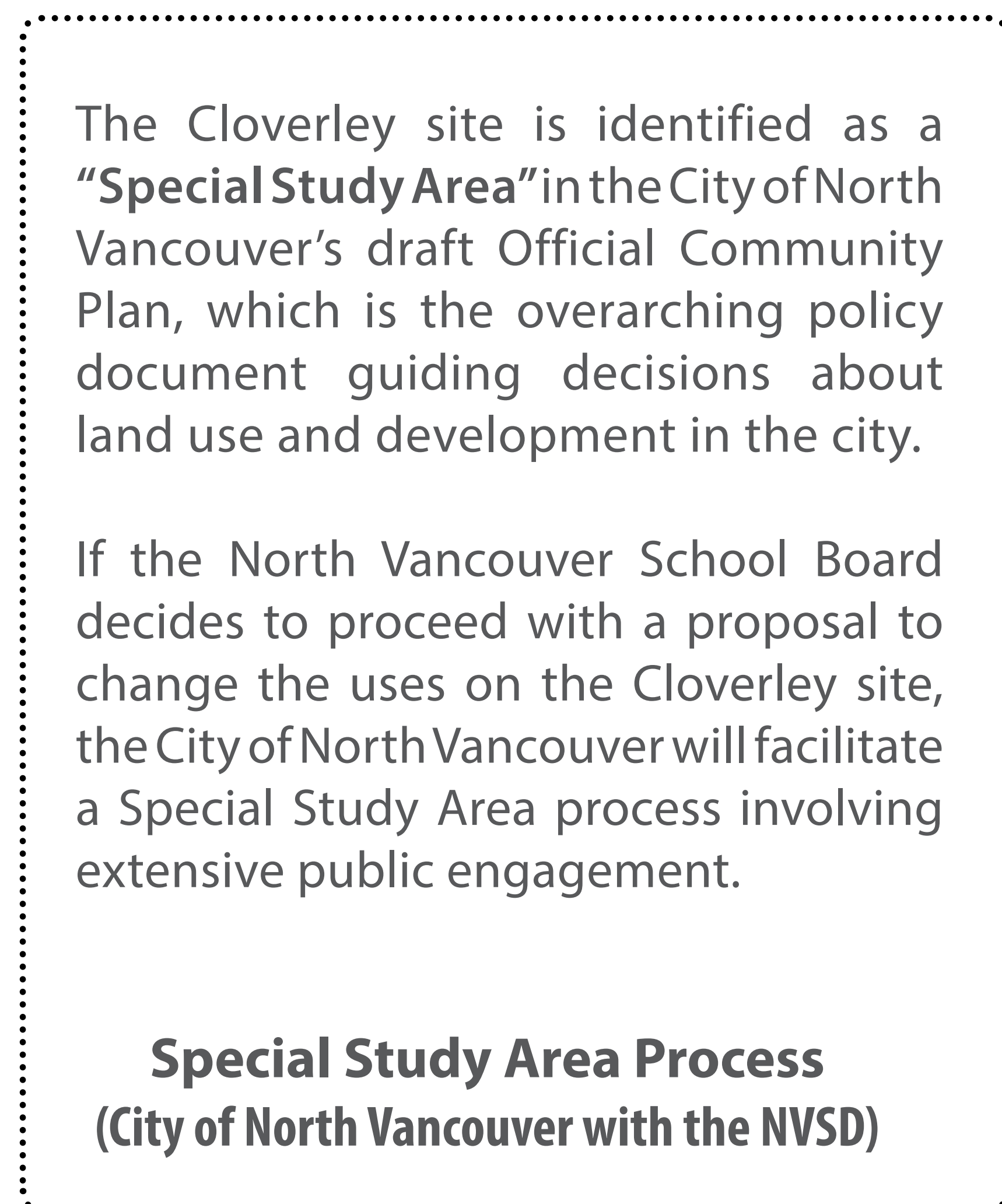
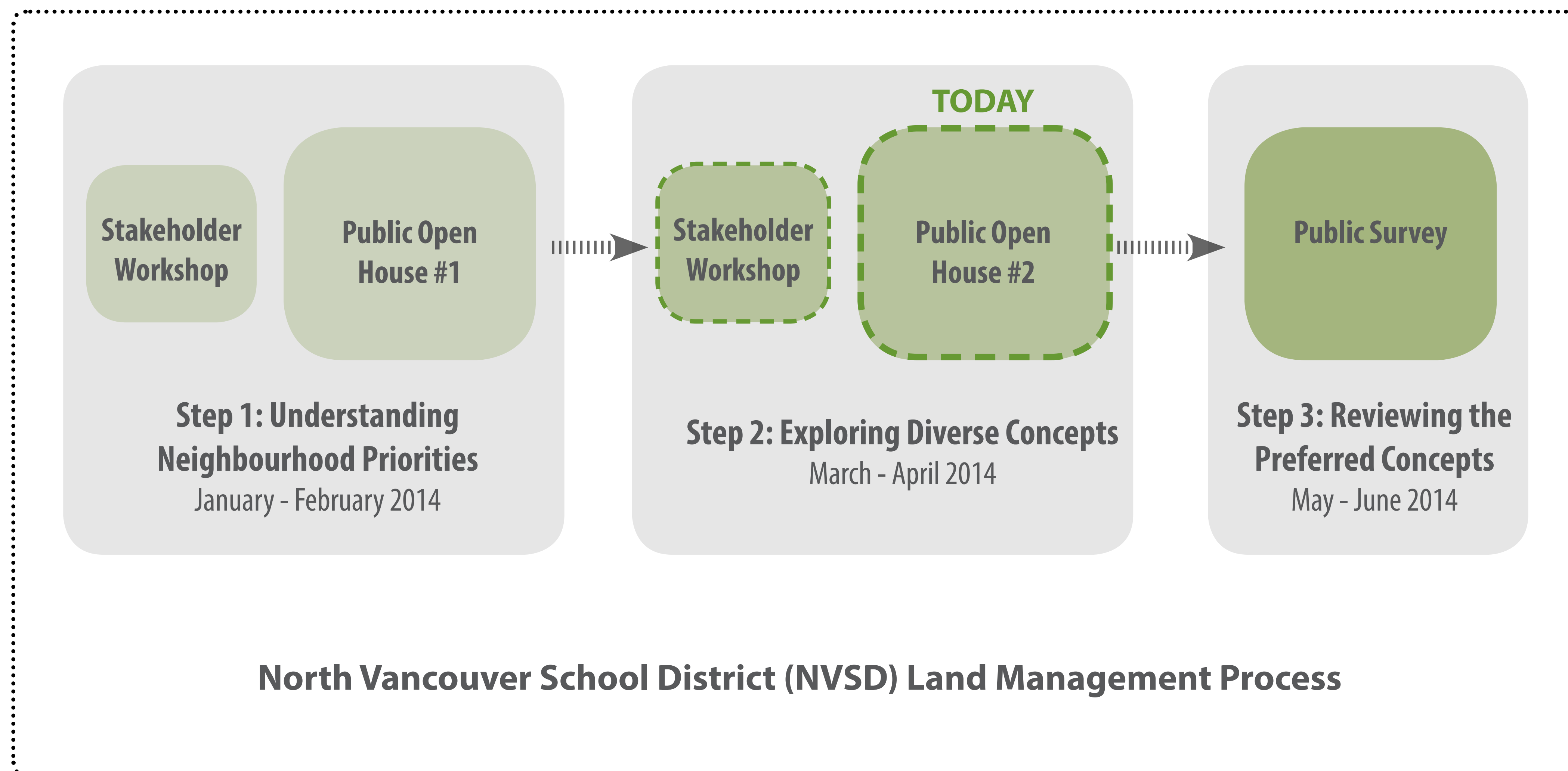
- inform the community about the project, including opportunities for involvement;
- share information about the land management process and what is possible for the future of the sites;
- obtain public input on priorities - including hopes and concerns - and ideas; and
- communicate how this extensive input has been integrated into land management concepts

## Using Public Input

Public input is one of several inputs into the development of ideas and eventual recommendations for the future of Cloverley site.

In Step 1, public input was used to inform one or more aspects within each of the concepts presented today. Based on what we hear today (Step 2), further revisions will be made to these concepts and recommendations will be developed for the future use of the Cloverley site, as part of Step 3. Other considerations include City of North Vancouver policy frameworks, financial return, and other Guiding Principles developed by the NVSD for this process. Refer to Panel #8 for these details.

Once this process is complete in June, additional opportunities for public engagement will form part of a process facilitated by the City of North Vancouver.



Updates on the overall public engagement process will continue to be provided on the NVSD’s Land, Learning, and Liveability blog at: [www.sd44.ca/Board/LandLearningLivability/](http://www.sd44.ca/Board/LandLearningLivability/)  
To learn about how to fill out a survey in May, please visit Panel #18 (last one).

