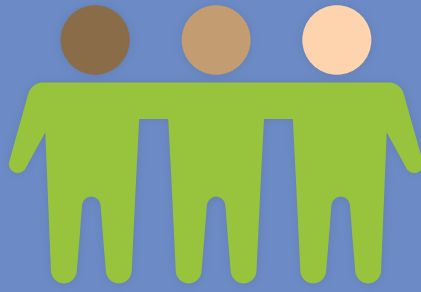


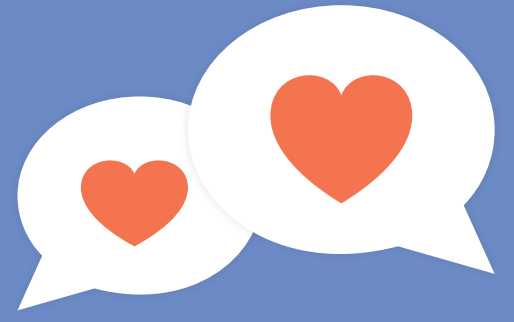
10 Universal Elements for Caring and Compassionate Schools



Include First People's Principles of Learning



Connect and welcome



Talk about feelings



Empathize with others



Model coping skills



Nurture hope



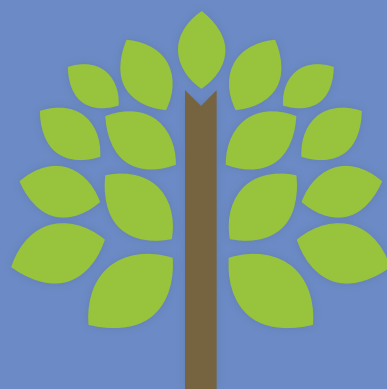
Maintain routines



Engage students



Communicate safety



Cultivate community

Social Emotional Learning and Mental Health

www.sd44.ca/sites/SEL