



GRADE 12 PARENT INFO NIGHT

October 9, 2025

Gr. 12 IB Coordinator: Cora Pross

SESSION OVERVIEW:

- **Graduation requirements**
 - *Capstone*
- **Expectations for grade 12**
 - *Teacher presentations*
 - *IA dates*
 - *DP exams*
- **Planning for post-secondary**
 - Local applications
 - Canadian applications
 - International applications





EXPECTATIONS FOR GRADE 12 STUDENTS

- Complete homework (2–3 hours per night)
- Study for tests and exams
- Manage time effectively
- Meet deadlines
- CAS Activities
- Manage stress and emotions



**Preparing
students for
university**

5 Tips TO HELP TEENS COPE WITH STRESS

GET SOME SLEEP



Getting enough sleep helps you grow and develop normally, pay attention throughout the day, and maintain overall health. For teens, this means about **8-10 hours each night**.



FOCUS ON YOUR STRENGTHS



Take time to **think about what you're good at** and ways to do more of those things. By focusing on and building your strengths, you can keep your stressors in perspective.



DO THINGS THAT MAKE YOU HAPPY



Find activities or hobbies that make you happy and incorporate them into your daily life.



ENGAGE IN PHYSICAL ACTIVITY



Exercise takes our mind off stress and releases chemicals in our brain that make us feel better. This can be anything from a stroll in the park, to a downhill bike ride or basketball game with friends.



TALK TO SOMEONE



It can be hard to manage stress alone. Talk to a parent, teacher or other trusted adult about your problems and they may be able to help you find **ways to manage your stress**.



MENTAL
HEALTH
FIRST AID

[MHFA.org/teens](https://mhfa.org/teens)



GRADUATION REQUIREMENTS

All DP courses satisfy the graduation requirements in BC.

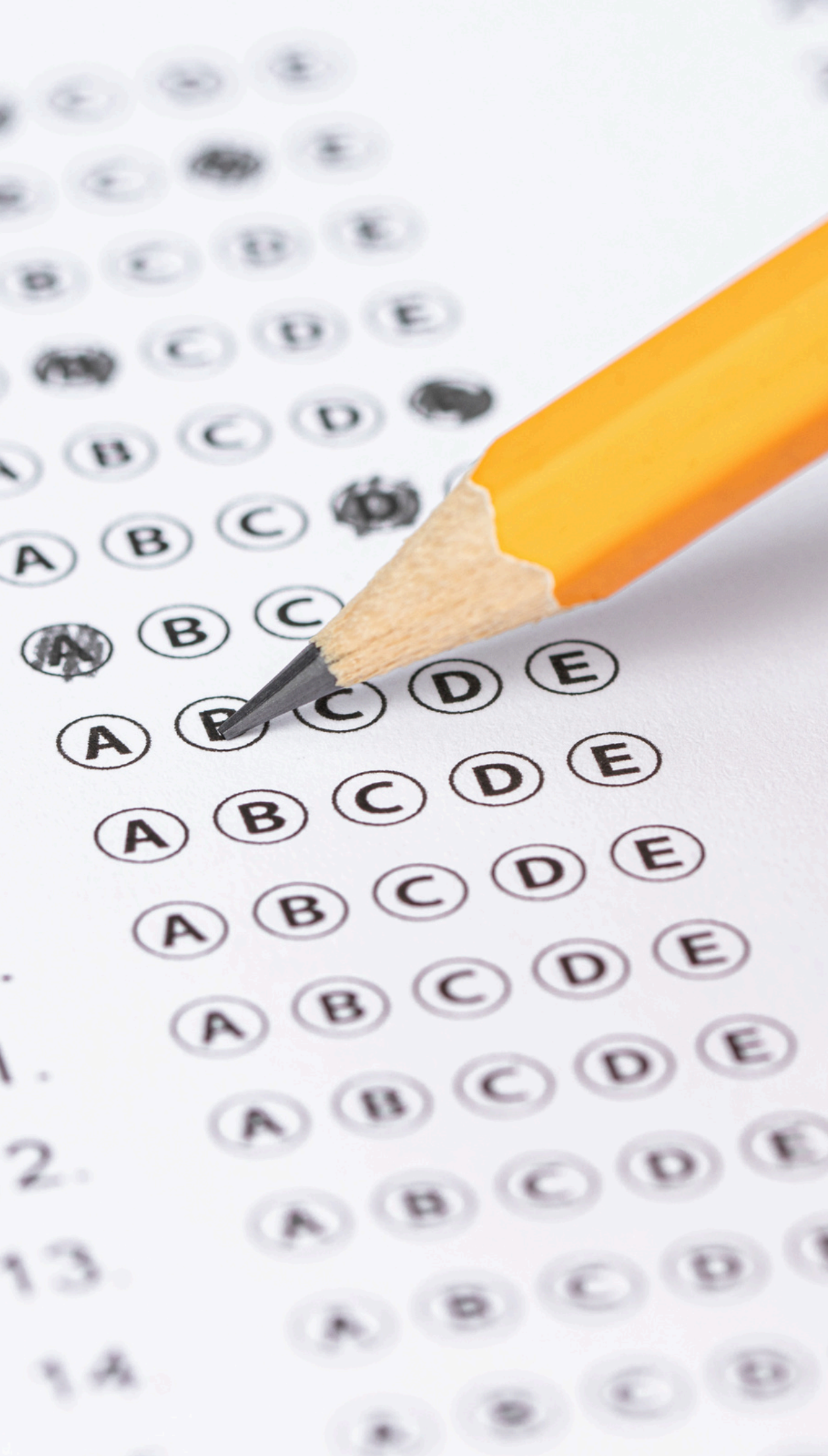


CLC-12 credit is achieved by successfully completing DP Core classes, including TOK, EE and CAS.

- Students will complete their Capstone presentations on **Thursday, March 5, 2026** from 6-8pm (Library)
- Parents are invited to attend.



Indigenous-focused credit is achieved through Language and Literature 12.



PROVINCIAL ASSESSMENTS

- Grade 10 Graduation Literacy Assessment
- Grade 10 Graduation Numeracy Assessment
 - If your grad has not written these assessments, they must see their counsellor.
- Grade 12 Graduation Literacy Assessment
 - DP students will write in November
 - Can rewrite if needed



ACCESSING TRANSCRIPTS

Student transcript services

- www.StudentTranscripts.gov.bc.ca
- Students will need to create an account in order to:
- Request official transcripts
- Order graduation certificate

Order transcripts or certificates as a



[Current student](#)

- You are now enrolled in a secondary school, or
- Have completed a course within the last six months



[Former student](#)

- More than six months have passed since you completed a secondary school course

BC How to register for a Basic BCeID and access the StudentTranscripts Service (STS) Copy link

Sample
Middle Name
Last Name *
Sample
Date of Birth (dd/mm/yyyy) *
11/11/1111

Contact Information
Please ensure your contact information is correct and up to date in order to receive email about your StudentTranscript Services account.
Email *
Confirm Email *
Phone Number

Collection Notice
The StudentTranscripts application collects personal information for the purposes of verification to authorize you to access your own student records or in some cases, where automated access is not possible, to retrieve and/or mail your student record information. This information is collected by the Ministry of Education and Child Care under section 26(c) of the Freedom of Information and Protection of Privacy Act. Should you have any questions about the collection of this personal information, please contact:
Transcripts Administrator
PO Box 9886 Stn Prov Govt
Victoria B.C. V8W 9T6
studenttranscripts@gov.bc.ca

Submit Cancel

Watch on YouTube Home About gov.bc.ca Disclaimer Privacy Accessibility Copyright Contact Us



EARNING THE IB DIPLOMA

Each of 6 courses – max of 7 points

$$6 \times 7 = 42$$

Core curriculum extra points (TOK, EE, & CAS)
max 3 extra points

Total out of 45 maximum

$$42 + 3 = 45$$

Minimum score of 24 points to earn diploma



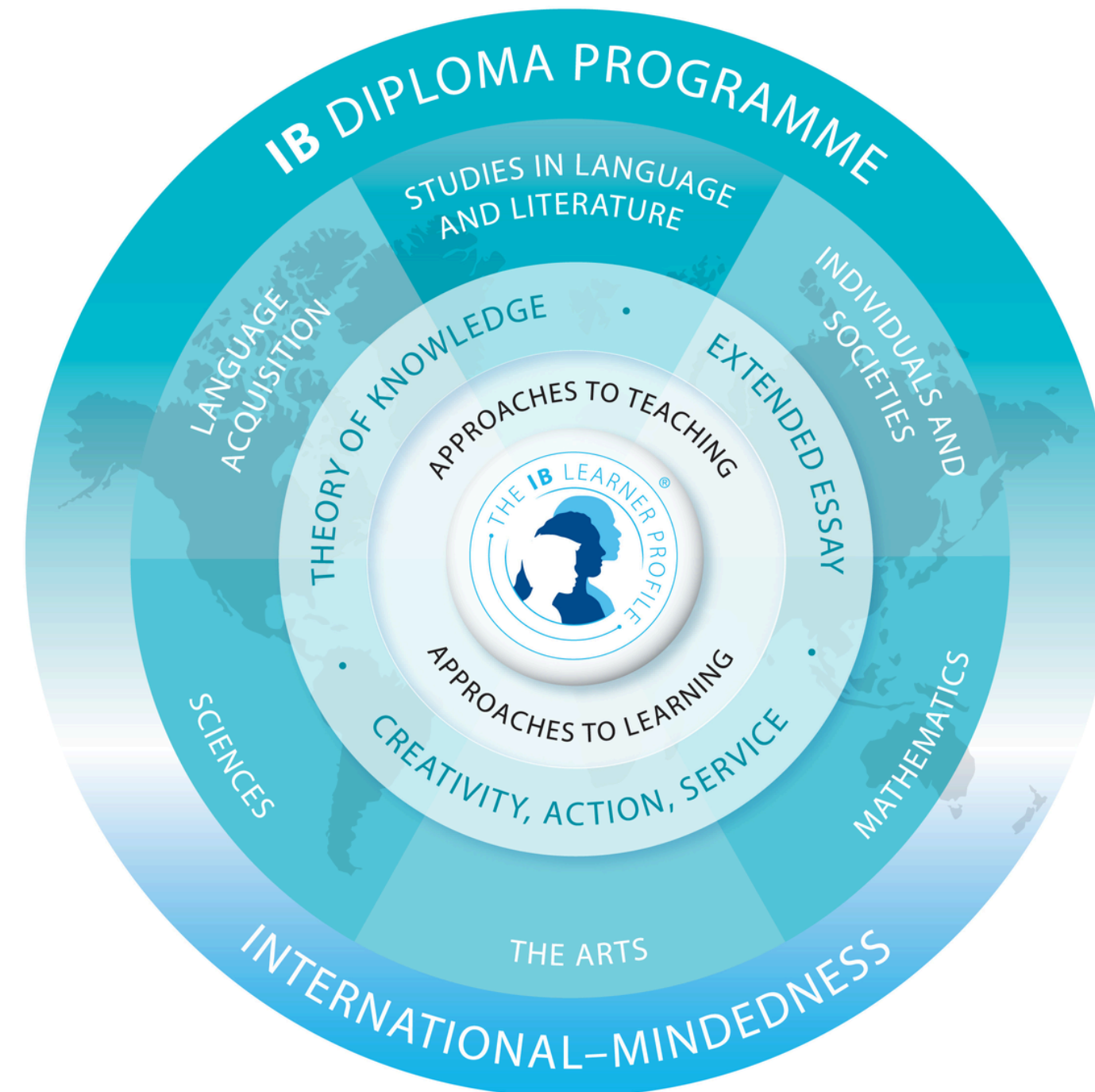


EARNING THE IB DIPLOMA

- CAS requirements must be met
- Pass Theory of Knowledge (grades A through D)
- Pass Extended Essay (grades A through D)
- Complete all Internal Assessments
- Earn a grade above 1 for all subjects/levels
- No more than 2 level 2's (HL or SL)
- No more than 3 level 3's (HL or SL)
- at least 12 points on HL subjects
- at least 9 points on SL subjects



SUBJECT OVERVIEWS



Science 12

2 main Internal Assessments (IA) components:

- Collaborative Science Project
- Individual Investigation
- Collaborative Science Project completed last year
- Individual Investigation (IA) is where students design, prepare, execute and analyze their own experiment
- Students write an IA in each science they are studying
- 2 Lab Saturdays
 - October 25th (1st Paper)
 - November 15th (2nd Paper)



Science 12

2025-26 DEADLINES	1 st Paper		2 nd Paper
INITIAL PROPOSAL SUBMITTED	October 9 th		October 9 th
RESEARCH QUESTION APPROVED	October 14 th		October 14 th
PRELAB & TIMELINE APPROVED (Procedure, Detailed Materials List & Lab dates requested)	October 20 th		October 20 th
LAB SATURDAYS: Oct 25 th & Nov 15 th			
DATA COLLECTED:	November 16 th		November 28 th
1 st DRAFT HANDED IN	December 15 th		January 20 th
1 st DRAFT RETURNED	January 9 th		February 9 th
FINAL DRAFT	January 30 th		February 25 th

Math AA

-Internal Assessment

-Exploration Essay

Students are required to complete an individual mathematical exploration. This is a piece of written work that involves investigating an area of mathematics.

Due dates:

Math IA outline - Due Sep 12th

First draft – Due Nov 14th

Final copy - Due Jan 16th

Math SL Requirements

Assessment component	Weighting
External assessment (3 hours)	80%
Paper 1 (90 minutes)	
No technology allowed. (80 marks)	40%
<i>Section A</i>	
Compulsory short-response questions based on the syllabus.	
<i>Section B</i>	
Compulsory extended-response questions based on the syllabus.	
Paper 2 (90 minutes)	40%
Technology required. (80 marks)	
<i>Section A</i>	
Compulsory short-response questions based on the syllabus.	
<i>Section B</i>	
Compulsory extended-response questions based on the syllabus	
Internal assessment	20%
This component is internally assessed by the teacher and externally moderated by the IB at the end of the course.	
Mathematical exploration	
Internal assessment in mathematics is an individual exploration. This is a piece of written work that involves investigating an area of mathematics. (20 marks)	

Mathematics: applications and interpretation (AI)



Chris Zytaruk
czytaruk@sd44.ca

Assessment outline—SL

First assessment 2021

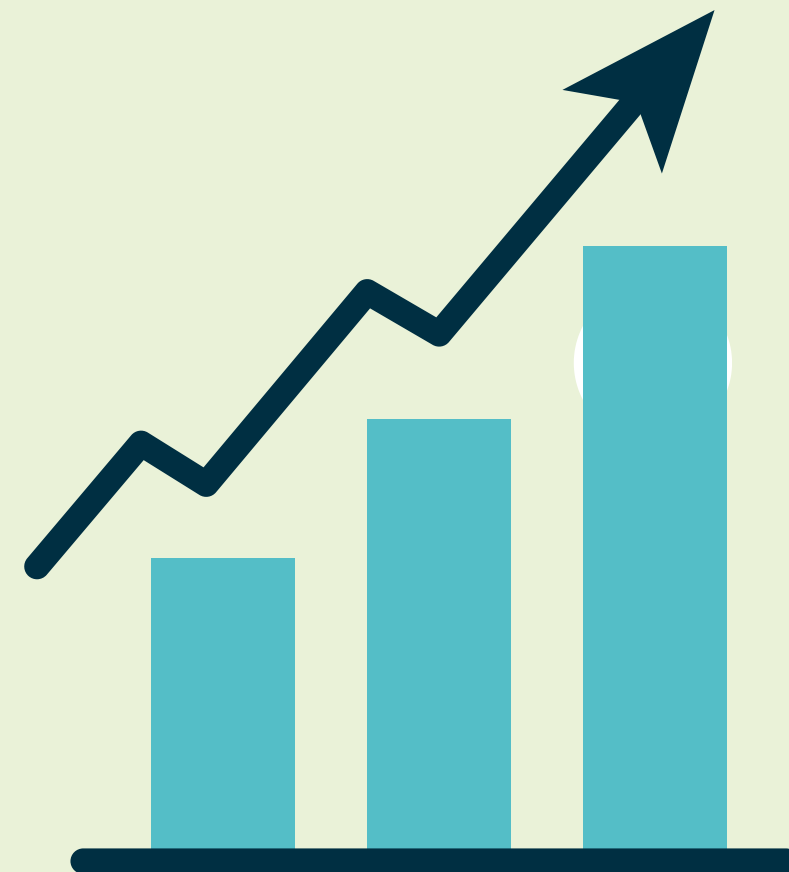
Assessment component	Weighting
External assessment (3 hours)	80%
Paper 1 (90 minutes) Technology required. (80 marks) Compulsory short-response questions based on the syllabus. (80 marks)	40%
Paper 2 (90 minutes) Technology required. (80 marks) Compulsory extended-response questions based on the syllabus. (80 marks)	40%
Internal assessment This component is internally assessed by the teacher and externally moderated by the IB at the end of the course. Mathematical exploration Internal assessment in mathematics is an individual exploration. This is a piece of written work that involves investigating an area of mathematics. (20 marks)	20%

MATH AI INTERNAL ASSESSMENT



Criterion A	Presentation
Criterion B	Mathematical communication
Criterion C	Personal engagement
Criterion D	Reflection
Criterion E	Use of mathematics

- Develop students' insight into the nature of mathematics and applications
- Provide opportunities for students to complete a piece of mathematical work over an extended period of time
- Students independently investigate a topic that pursues personal interest
- Students experience the beauty, power and usefulness of mathematics



How to be successful in DP math 11/12 learning:

1. Make sure to make class time meaningful
2. Be motivated to ask questions
3. Keep running records on what they don't know
4. Math gets easier and more fun the more you practice!
5. Address what they don't know by coming to tutorial before things get too difficult
6. Delve deeper into understanding through exploration

Language B SPANISH & FRENCH

Teachers

SPANISH: Erin García

FRENCH: Céline Kossmann



What makes an IB language course different?

- CONCEPTUAL APPROACH
 - Purpose and context
- PERSONAL EXPERIENCE
- CULTURE

Diagram illustrating the structure of a letter, numbered 1 through 7:

- 1 Encabezamiento
- 2 Nombre o firma
- 3 Ciudad y fecha
- 4 Saludo
- 5 Cuerpo
- 6 Despedida
- 7 Postdata

Example text from the diagram:

{Santiago, 5 de marzo de 2011}

{Querida Carolina:}

Ayer fui de paseo con mis padres y hermanos a un parque precioso que se encuentra cerca de mi casa, se llama Parque Araucano.
Me encantaría que la próxima vez que nos visites vayamos juntas y nos divirtamos en los juegos y la cancha de patinaje. Espero que nos veamos muy pronto para poder compartir y jugar.

Cariños a todos en tu casa.
Camila

{P.D: No olvides traer tus patines.}

1-heading, 2-name and signature, 3-city and date, 4- greeting, 5-body, 6-closing, 7-P.S.

SNAPCHATEANDO CON... Objetivos: Personalidades. Sociedad. Querer. EXTRA

Nemonte Nenquimo

Ahora snapchatea con la defensora ecuatoriana de los derechos* de la naturaleza y de los pueblos indígenas.

PREPARA
¿Qué pueblos indígenas hay en tu país?

Perfil
Nemonte Nenquimo
Activista indígena
60 K suscriptores
1985 - presente
Ecuador

1 AHORA
¡Hola, Nemonte!
Para ti, ¿qué es ser una mujer de la nación waorani?

NEMONTE
Ser mujer waorani es ser mujer de paz* en una selva* viva y conectada con la naturaleza. Somos un pueblo indígena del Amazonas. 🌿

2 AHORA
Como activista, ¿cuál es tu objetivo?

NEMONTE
Mi objetivo es defender los derechos de los pueblos indígenas. Queremos respeto. No queremos más explotación, no queremos más destrucción de nuestra selva.

3 AHORA
¿Y cuál fue tu lucha* más importante?

NEMONTE
Los gobiernos quieren constantemente vender las tierras de los pueblos indígenas a las empresas petroleras* sin consultarnos. Y en Ecuador lo hicieron. Por eso en 2019 demandamos* al Estado.

4 AHORA
¿Y ganaron*?

NEMONTE
¡Sí! 🙌 Ahora, si el gobierno quiere subastar* tierras, tiene que incluir a todas las nacionalidades en ese diálogo.

5 AHORA
Y en 2023, Ecuador decidió detener* todos los nuevos pozos petrolíferos* en el Parque Nacional Yasuni en la tierra waorani, ¿no? ¡Gracias a tu trabajo!

NEMONTE
Sí, los ecuatorianos quieren proteger su país. Esta es una lucha de todos. Juntos podemos más. 🙌

VOCABULARIO 5 Cs: Cultura | Comunicación | Conexiones | Comparaciones

el derecho - right - le droit • la paz - peace - la paix • la selva - rainforest - la forêt • la lucha - battle - la lutte • la empresa petrolera - oil company - la compagnie pétrolière • demandar - to sue - poursuivre • ganar - to win - gagner • subastar - to auction - mettre aux enchères • detener - to stop - arrêter • el pozo petrolífero - oil well - le puits de pétrole

16 ahora abril 2024 www.mg-plus.net/ahora

THEMES

Identity

Experiences

Human Ingenuity

Social Organization

Sharing the Planet



How to study at home

- **Read and Listen for at least 15 minutes everyday in TARGET LANGUAGE.**
- There are apps like [Spanishdictionary.com](https://www.spanishdictionary.com) that support self-paced learning
- Find a podcast in the target language, ex. [News in Slow Spanish](#)
- Library has leveled novels

EARLY CLASSES & TUTORIAL TIME

SPANISH – EARLY CLASSES

- DP 11 - WEEK 1- FRIDAY at 8:30am
- DP 12 - WEEK 2 - TUESDAY at 8:30am

FRENCH- EARLY CLASSES

- DP 11 - TBD
- DP 12 - TBD

NEED MORE TUTORIAL?

- daily 8:30am - 9:00am
 - (talk to your teacher ahead to plan how to best use the time)
- Peer tutoring

FRENCH HL?

- Block 8 according to the schedule



ASSESSMENT

- Term grades will be based on:
 - LISTENING
 - SPEAKING
 - READING
 - WRITING
 - Projects (ex. Countries project)

FOR Year 2 ONLY – FINAL ASSESSMENT

(INTERNAL & EXTERNAL)

INTERNAL: Individual Oral Assessment

SATURDAY, February 21st, 2026

- **SPEAKING:** Approx. 13-15 minutes spontaneous conversation
 - (15 min) preparation
 - (3-4 minutes) Presentation / monologue about a visual related to a topic studied in class
 - (10-11 minutes) Followed by discussion with the teacher.
- Student must demonstrate an ability to SPEAK in TARGET LANGUAGE while making connections to the THEMES, their own PERSONAL EXPERIENCE and the CULTURE
- Worth 25% of the final grade



FOR Year 2 ONLY – FINAL ASSESSMENT

(INTERNAL & EXTERNAL)

EXTERNAL: Final Exam May 2026

- Paper 1: **WRITING**
 - Students write with purpose in response to a prompt
 - *Ex. You are on the student council, you are concerned about the amount of litter around the school. You want to propose a clean up the school initiative. Write a text to the school principal to present your idea and get permission.*
- Paper 2: **LISTENING** and **READING**
- Worth 75% of final grade

How to contact your teacher

- **Parents: email** the teacher directly
 - SPANISH: Erin García
 - egarcia@sd44ca
 - FRENCH: Céline Kossmann
 - ckossmann@sd44.ca
- **Students:** send a **chat** message in MS teams

DP French 12

Celine Kossmann
ckossmann@sd44.ca

Core Language Components

Link word and connectors

Past, Present, Future, Imperative and

Conditionnal tenses

Relative pronouns and Object pronouns

Opinion, hypothesis, comparison

Explanation, description, narration

Advice, suggestion, commands

Communication: rephrasing, questioning,
detailing in response

Themes studied in Year II

1.Human Ingenuity – How smartphones and artificial intelligence affect the world.

2.Experiences - how migrations shape our lives.

3.Sharing the planet - Explore the environmental challenges and opportunities faced by individuals and communities in the modern world.

Areas of Exploration: Lang & Lit

Readers, Writers, and Text:

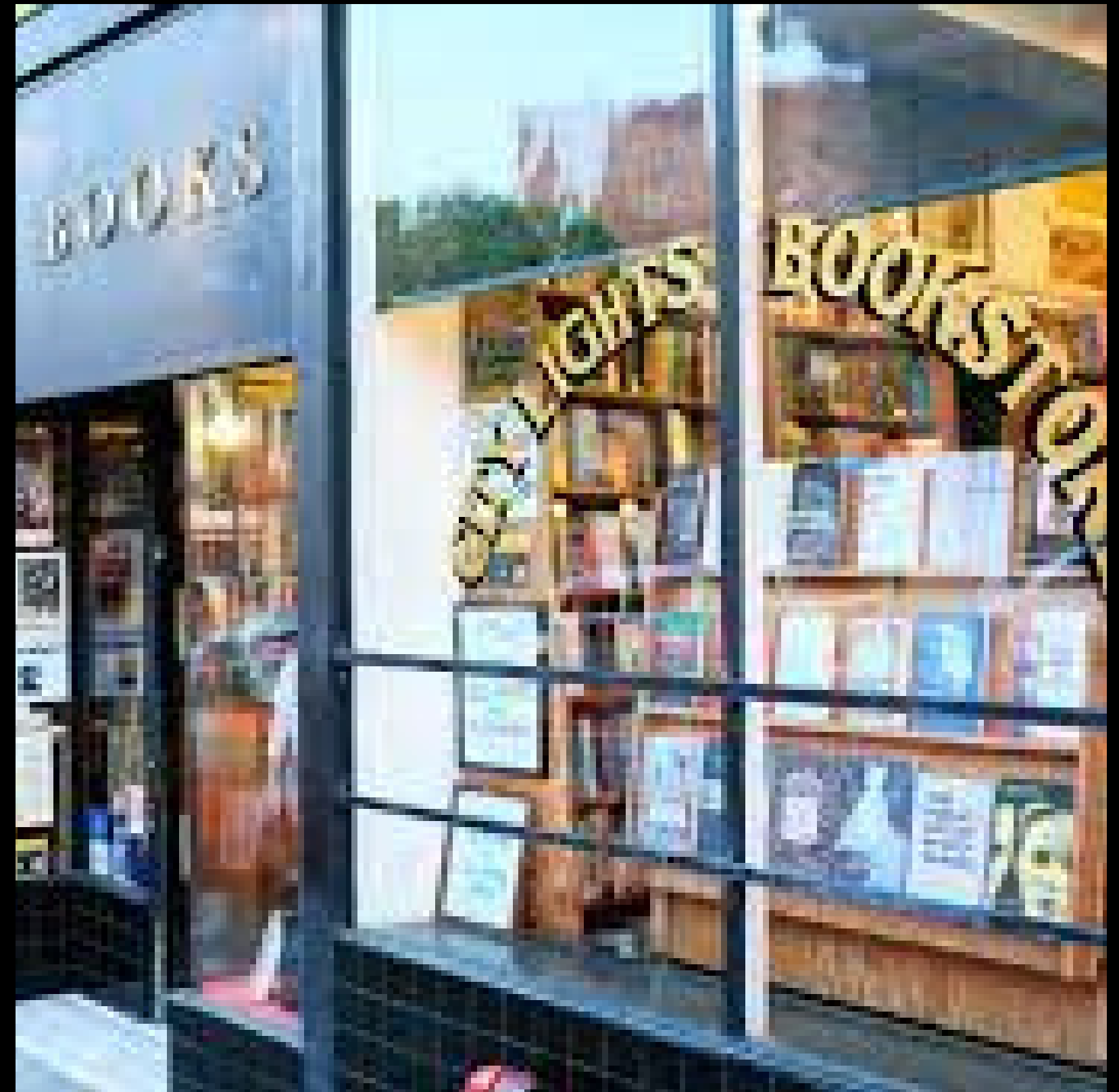
The study of the non-literary texts and literary works focuses on the nature of language and communication and the nature of literature and its study. This study includes the investigation of how texts themselves operate as well as the contexts and complexities of production and reception.

Time and Space:

The focus is on the consideration of personal and cultural perspectives, the development of broader perspectives, and an awareness of the ways in which context is tied to meaning

Intertextuality:

Their study focuses on intertextual relationships with possibilities to explore various topics, thematic concerns, generic conventions, modes or literary traditions that have been introduced throughout the course. The focus is on the development of critical response grounded in an understanding of the complex relationships among texts.



IB MARK COMPONENTS	
Assessment component	Weighting
May Exam: Paper 1 Guided textual analysis (2 hours 15 minutes) The paper consists of two non-literary passages, from two different text types, each accompanied by a question. Students write an analysis of each of the passages. (40 marks)	35%
May Exam: Paper 2 Comparative essay (1 hour 45 minutes) The paper consists of four general questions. In response to one question students write a comparative essay based on two literary works studied in the course. (30 marks)	25%
HL essay: Draft Due Dec 5 / Final Copy Due Jan 16 Students submit an essay on one non-literary body of work, or a literary work studied during the course. (20 marks) The essay must be 1,200-1,500 words in length.	20%
Internal assessment: Individual oral (15 minutes): Feb 2 to Feb 7 This component consists of an individual oral which is internally assessed by the teacher and externally moderated by the IB at the end of the course. Individual oral (15 minutes) Supported by an extract from both one non-literary body of work and one from a literary work, students will offer a prepared response of 10 minutes, followed by 5 minutes of questions by the teacher, to the following prompt: Examine the ways in which the global issue of your choice is presented through the content and form of one of the works and one of the bodies of work that you have studied. (40 marks)	20%

- Assessment outline—HL
- SL assessment is the same, except that on the Paper One Exam, the students write on a single, non-literary passage
- Note: Texts can only be used once for assessment. For example, if a student writes their HL Essay on *The Bell Jar*, they are not allowed to use that text for their IO or the Paper Two Exam

DP Geography 2nd year

Kit Bjornson

kbjornson@sd44.ca

- **Global issues of food and health (Paper 1 Option 2) HL & SL**

- Ex. Diseases of poverty vs. diseases of affluence

- **Freshwater (Paper 1, Option 3) HL**

- Ex. Competing demands (local, national international)

- **2nd part of Environmental issues and resource use (Paper 2)**

- SL & HL

- **Global interactions (HL)**

- Power, place and networks
- Diversity and development
- Risks and resilience

Kit Bjornson

kbjornson@sd44.ca

Global Politics Y2

Units of Study:

Unit 1: Power, Sovereignty, and International Relations – done

Unit 2: Development – done

Unit 3: Human rights – in progress

Unit 4: Peace and Conflict – completed by Spring Break

Engagement Activity:

- final paper due end of Jan

HL Presentations:

- 1st done June (re-recording)

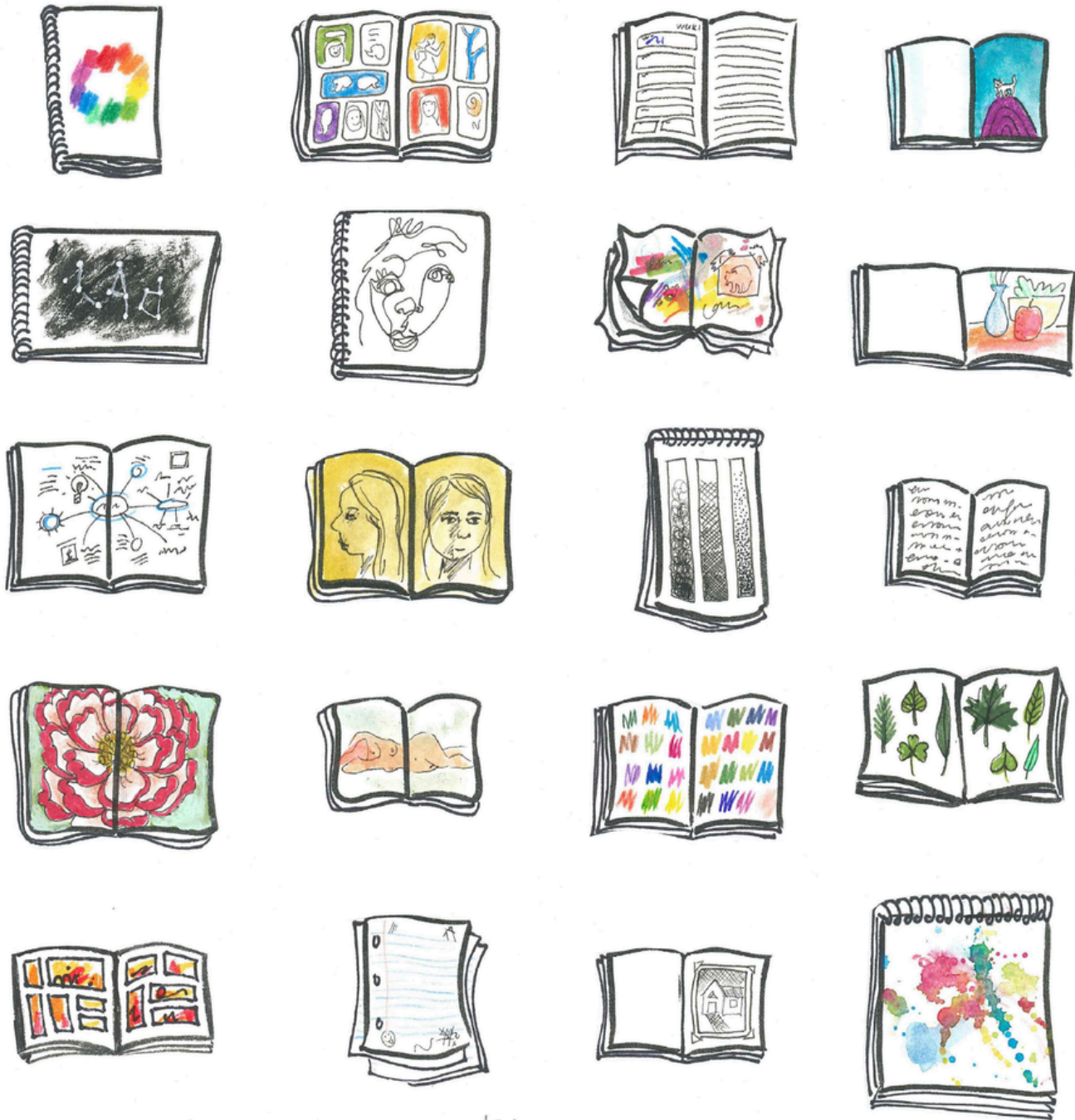
- 2nd due March

Final Exams: May

SL: Paper 1 & 2 (2 essays)

HL: Paper 1 & 2 (3 essays)

Visual Arts



Comparative Study

External Assessment

Comparative analysis of three artworks from three different cultural contexts

Exhibition

Internal Assessment

Week of Celebration of IB in March

8-11 artworks on display in the Agora

Process Portfolio

External Assessment

Digital presentation of artistic process and experimentation throughout the course



IA DATES PLACEHOLDER SLIDE



CARSON GRAHAM DIPLOMA PROGRAMME

IMPORTANT ASSIGNMENTS & DEADLINES

May 2024 Cohort

GROUP 1 – LANGUAGE & LITERATURE

Internal assessment in the language A: language and literature course consists of a compulsory oral task, the Individual oral commentary (IOC), which must be conducted in the language A studied - this is recorded and sent to the IB for moderation purposes.

Individual Oral Commentary (IOC) – Monday, February 5th - Saturday, February 10th

Higher Level (HL) students are required to submit 1 essay exploring an aspect of the material studied in the course. This will be completed during their grade 12 year.

HL Essay – Complete draft due Dec 5th, Final paper due late January.





INDIVIDUAL ORALS & DP EXAMS

Individual Orals:

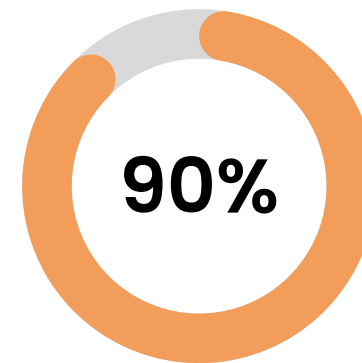
- English, French and Spanish have mandatory oral assessments worth 25%-30% of their grade.
- Oral exams are scheduled **February 7 and 21**.
- Students are assigned an exam time and cannot reschedule. Missed orals will result in a non-submission to IB.

DP Exams:

- Written papers consist of essay questions, short-answer questions, and multiple-choice questions. Written papers assess students' knowledge, understanding, and ability to construct coherent arguments.
- Dates and times are set by IB and cannot be rescheduled.
- Exam accommodations are determined by IB.



APPLYING FOR POST-SECONDARY



There are many opportunities for IB Diploma graduates!

We will explore local schools, Canadian schools and international options.



WHAT ARE UNIVERSITY TRANSFER CREDITS?




Search Result

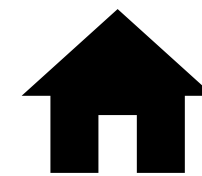
International Baccalaureate

Save to PDF

New Search

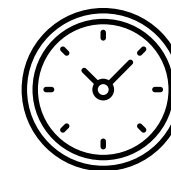
1 to 1 of 1 matches

IB Course	Institution	Articulation	Min Grade	Academic Year
Chemistry	 CAPU	CAPU CHEM 110 (4) & CAPU CHEM 111 (4)	6	2011/12 -



Recognition of Prior Learning

An institution evaluates previously completed coursework to determine if it's equivalent to one of its own courses or a set of courses.



Time Savings

Earning transfer credits can reduce the total time it takes to complete a degree or diploma by allowing students to skip courses at their new institution.



Cost Savings

When students earn transfer credits, they save money on tuition.



About UVic



UNIVERSITY
OF VICTORIA

Undergraduate admissions

International
Baccalaureate
students

[Programs](#)

[Scholarships](#)

[Transfer credit](#)

[Create your
custom viewbook](#)


[Contact a recruiter](#)

▪ [Bursaries](#) 

Transfer credit

We provide one of the most generous transfer-credit programs in Canada, putting you one step closer to your post-secondary goals before you even get here.

We'll give you up to one year of transfer credit if you complete a full IB diploma with minimum subject scores. If you're not completing a full IB diploma, your points can still count. We offer course-by-course transfer credit assessment for each Higher Level course completed as long as your scores meet our minimum requirements.

- If you're completing IB and another curriculum (e.g., BC Ministry of Education diploma or US high school diploma), we'll evaluate your application using your best-case scenario between the two curriculums.
- Check out the [BC Transfer Guide](#)  for the most up-to-date information on how your courses transfer.

Click [HERE](#) for the link to UVic undergraduate admissions

INTERNATIONAL BACCALAUREATE

CANADIAN HIGH SCHOOL

INTERNATIONAL HIGH SCHOOL
STUDENTS

UNITED STATES HIGH SCHOOL

INDIGENOUS STUDENTS

COLLEGE/UNIVERSITY TRANSFER

INTERNATIONAL BACCALAUREATE

DIVERSE QUALIFICATIONS

ADDITIONAL REQUIREMENTS AND
POLICIES BY APPLICANT TYPE

PARTNERSHIPS ▶

ADMISSION GRADE RANGES

As an IB Diploma holder, you've already proved your academic skills. At SFU, we value your strong work ethic, solid organizational skills and a fierce spirit of inquiry. Join our university community in seeking out solutions that can make a difference.

We grant:

- one full year of [transfer credit](#) (30 units) for a completed IB Diploma

If you are completing a partial IB program, we will consider you for admission on the basis of your secondary school results. Transfer credit will be granted for higher level courses completed with a minimum score of 5. Transfer credit is not awarded for standard level courses.

ON THIS PAGE:

[General admission requirements](#)

[Faculty/Program-specific requirements](#)

[IB transfer credit](#)

Click [HERE](#) for the link to SFU undergraduate admissions



THE UNIVERSITY OF BRITISH COLUMBIA

Undergraduate Programs and Admissions

[Programs](#) [Applying to UBC](#) [Financial planning](#) [UBC Life](#) [Contact us](#) [Tours and events](#) [Your account](#)

[Home](#) > [Applying to UBC](#) > [Admission requirements](#) > [International Baccalaureate students](#) > [Vancouver](#)

1

International Baccalaureate students

UBC and the International Baccalaureate Organization share a common vision – we believe global perspectives are key to education. No wonder so many IB graduates succeed here.

When determining who receives an offer of admission, we look at more than just grades. Find out how you can **plan for UBC** and **what we look for** when evaluating your application.

Understanding UBC's admission requirements is an important first step. Select a campus and the degree you're interested in to find the general and degree-specific requirements you'll need to meet before you apply.

2

CHECK THE DEADLINES

**December 1,
2025**

(11:59 p.m. PST)

Scholarships and awards

- Canadian citizens and permanent residents: Deadline to apply to UBC if you wish to be considered for the [Presidential Scholars Awards](#), [UBC Centennial Scholars Entrance Awards](#), or the [Beyond Tomorrow Scholars Award](#).
- International applicants: Deadline to apply to UBC if you wish to be considered for the [UBC International Scholars Program awards](#).

**January 15,
2026**

(11:59 p.m. PST)

Applications due

- Deadline to apply for Winter Session (September 2026 to April 2027).
- Deadline to apply for Summer Session (May to August 2026), unless you're a [visiting, unclassified, or Access Studies student](#).

3

Write your personal profile

The personal profile is a crucial section in your UBC application. This is your chance to tell us about the things that are important to you, your significant achievements, what you've learned from your experiences, and the challenges you've overcome. It's our chance to determine whether you're a good fit for UBC and if you'll receive an entrance scholarship.

Click [HERE](#) for the link to UBC undergraduate admissions

UBC Vancouver Entering IB Diploma Point Totals for 2025

Degree Program	Mean Entering Point Total	Minimum Entering Point Total	Degree Program	Mean Entering Point Total	Minimum Entering Point Total
Pharmaceutical Sciences	35	29	Natural Resources	33	28
Engineering	37	34	International Economics	35	29
Commerce	36	31	Fine Arts	31	24
Kinesiology	34	30	Media Studies	37	24
Science	37	29	Design	36	34
Applied Biology	32	28	Arts	32	27
Food & Nutrition	30	27	Food and Resource Economics	26	24
Urban Forestry	28	27			

Overall Point Totals without the inclusion of IB Additional Points – no IBDP applicants for Music, Dental Hygiene or Indigenous Land Stewardship

UBC Vancouver Entering Program Averages for 2025

Degree Program Vancouver Campus	Mean Entering Average	Minimum Entering Average	Degree Program Vancouver Campus	Mean Entering Average	Minimum Entering Average
Pharmaceutical Sciences	95	89	Music	90	75
Engineering	97	95	International Economics	94	89
Commerce	95	85	Fine Arts	90	72
Kinesiology	94	85	Media Studies	91	71
Science	96	85	Design	95	91
Applied Biology	92	85	Arts	92	85
Food & Nutrition	91	85	Dental Hygiene	92	83
Urban Forestry	88	80	Indigenous Land Stewardship	82	74
Natural Resources	90	79	Food and Resource Economics	91	86

Mean entering ranges are approximate.

UBC Okanagan Entering Total IB Diploma Points 2025

Degree Program	Mean Entering Point Total	Minimum Entering Point Total
Engineering	31	24
Management	28	24
Nursing	30	29
Science	30	24
Arts	27	24
Sustainability	35	24
Health and Exercise Science	27	24

Overall Point Totals without the inclusion of IB Additional Points



Programs & Courses

Admissions



IB Diploma applicants

International Baccalaureate students are eligible for admission on the basis of successful completion of the IB Diploma. Capilano University English Language Requirements and program specific requirements must also be met.

For those students who are completing both the IB Diploma and another high school curriculum, Capilano will use the credential which offers the applicant the best advantage.

Transfer credit or advanced standing will be awarded for IB courses. Check [Transfer Credit](#) for a table of credit awarded for IB course work, or consult the [BC Transfer Guide](#).



For Domestic Students

Visit this page for more information about applying to CapU as a domestic student.

[APPLY AS A DOMESTIC STUDENT](#)



For International Students

If you are interested in studying at CapU as an international student, go to our international applications page.

[APPLY AS AN INTERNATIONAL STUDENT](#)

Click [HERE](#) for the link to Capilano undergraduate admissions

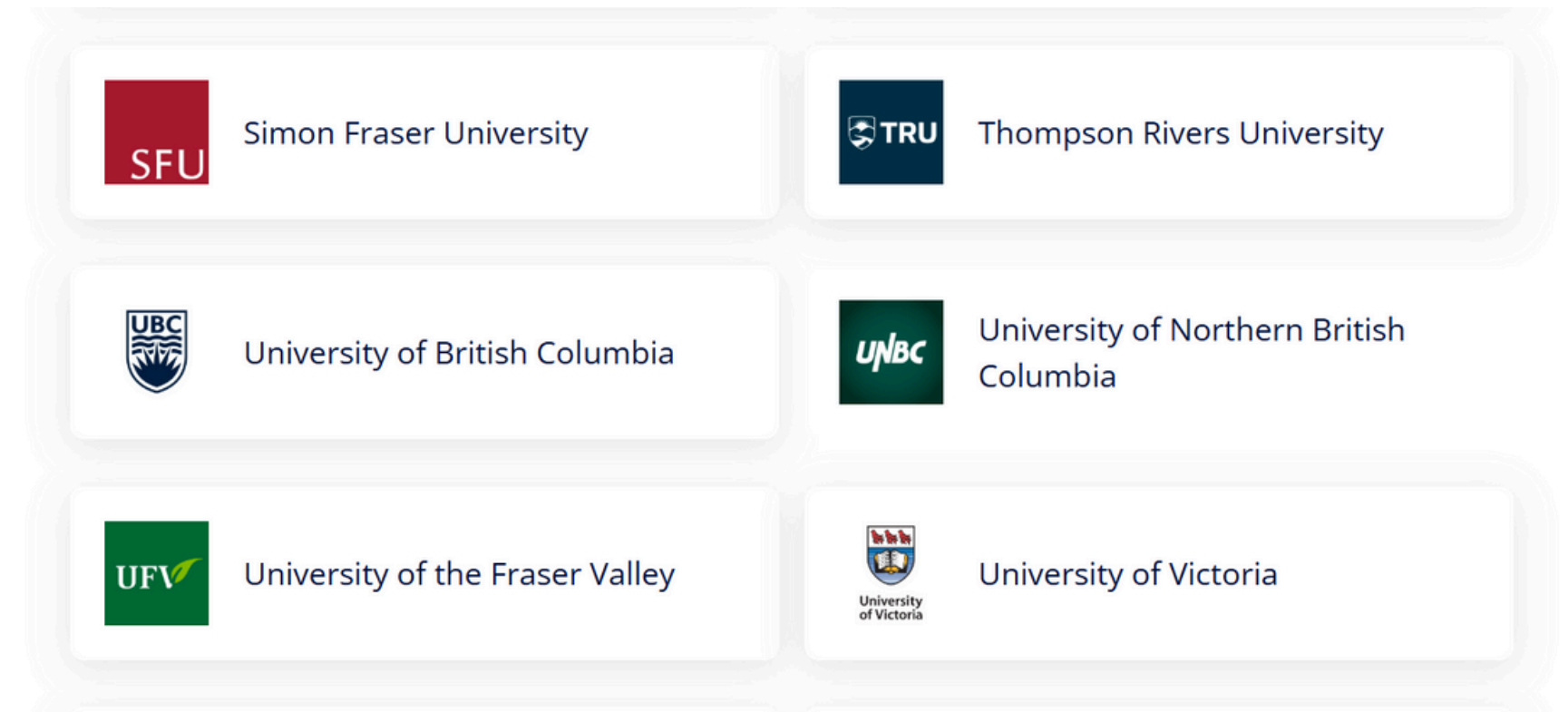
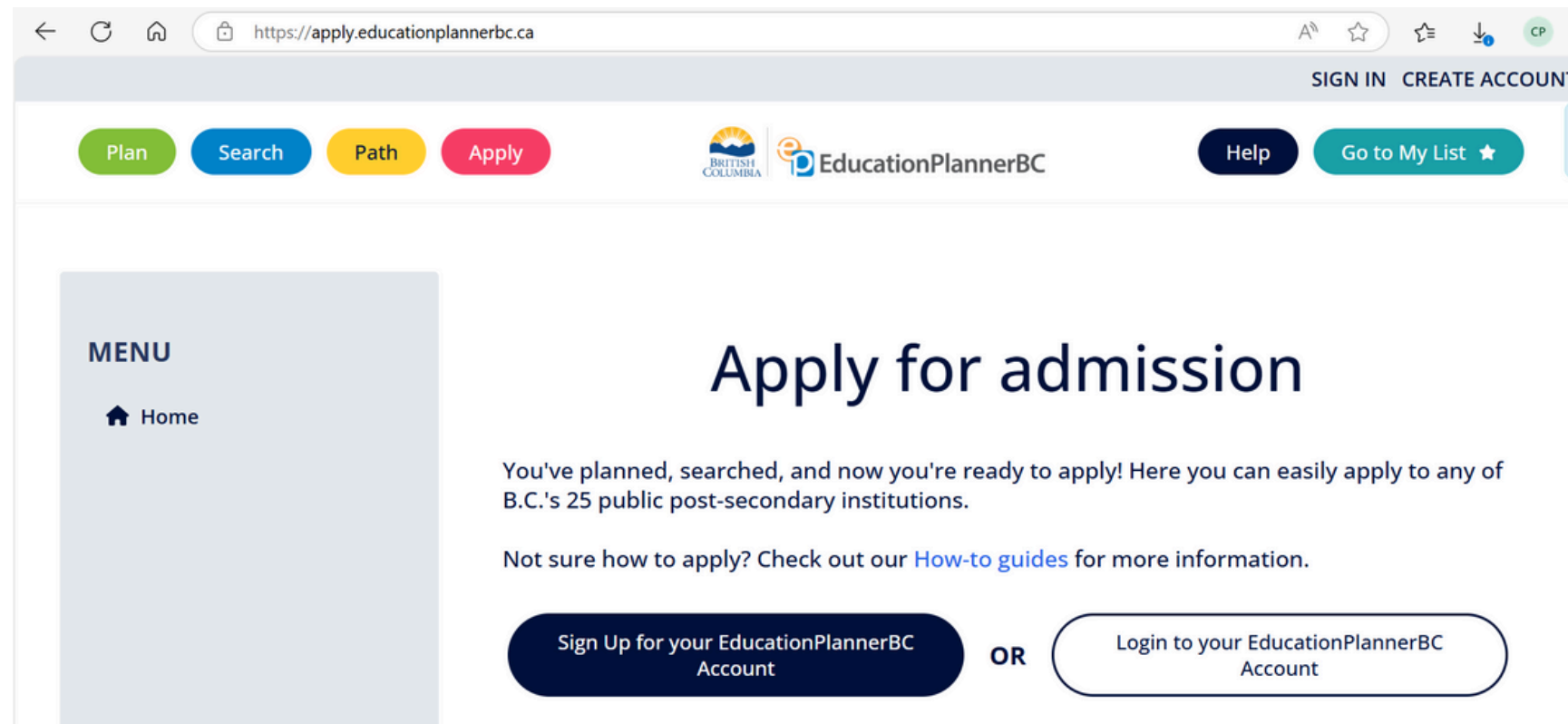


ALTERNATE PATHWAYS TO A UNIVERSITY DEGREE

- There are many ways to end up with a university degree other than direct entry from high school to a major university
- Many smaller college/universities have lower admissions averages, smaller class sizes, and direct transfer opportunities to university
- Some colleges and universities offer ways to upgrade and/or take pre-requisite courses

HOW TO APPLY FOR BC SCHOOLS?

Click [HERE](#) for the link to Education Planner BC






APPLYING TO SCHOOLS IN ONTARIO

Go to <https://www.ouac.on.ca/>
to complete an online
application for all schools in
Ontario.



Ready to Apply?

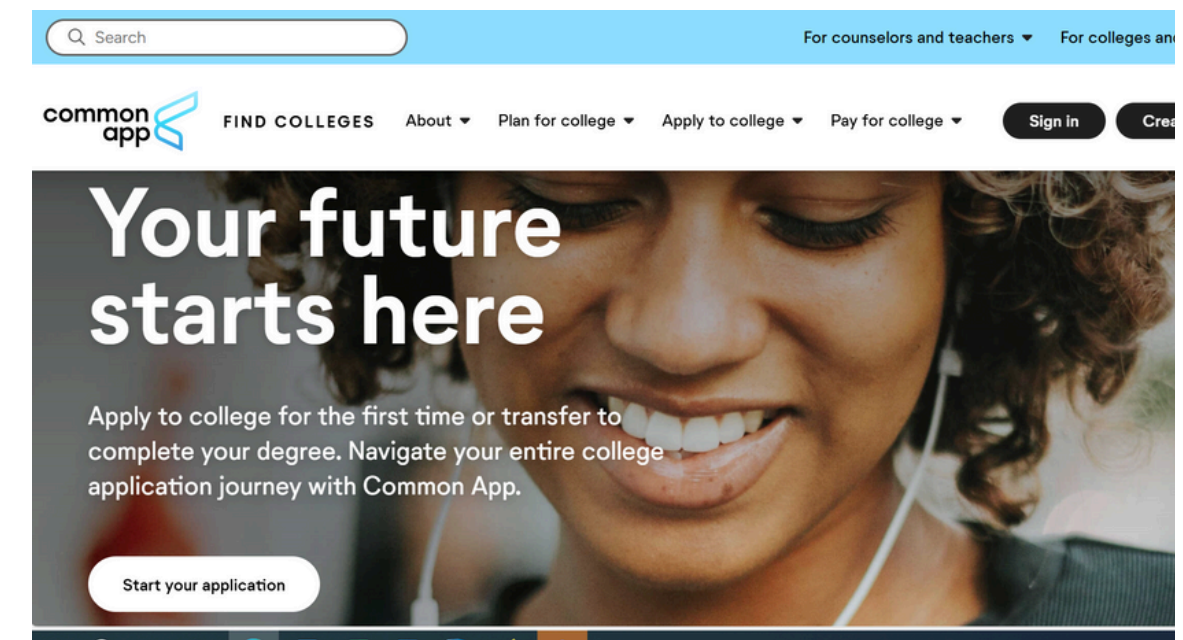
Once you've decided which programs you're interested in, it's
time to start your application to Ontario's universities.

Apply Now 



APPLYING TO SCHOOLS IN THE UNITES STATES

Go to
<https://www.commonapp.org/>
to complete an online
application for all schools in the
US.





AFTER YOU APPLY...



**Keep track of
applications on a
spreadsheet or phone**

**Make note of your
student number and
how to access the site**

**Look for contact
information for
admissions staff**

**Check if
supplemental
applications or
documents are
required**

**Continue to monitor
application to ensure
requirements and
conditions have been
met**

**Make a master to-do
list with important
deadlines**



ACCEPTING OFFERS:



ACCEPT

All offers are considered “conditional”

- Many schools extend offers throughout the Spring in multiple rounds and well into the summer
- Different programs offer at different times, so don't worry if your friends have heard and you haven't
- Each offer will come with an acceptance deadline – you need to officially accept the offer before this date
- You will likely need to pay a deposit when you accept the offer – you can accept offers at more than one institution (except in Ontario) but it will cost you
- All offers are conditional – read conditions of each offer carefully
- All offers are confirmed in July once final grades have been released by Ministry to institutions

A blurred background image showing a group of people in a meeting or collaborative work environment. The image is overlaid with a semi-transparent orange band containing the quote.

“

***Your future is created by what
you do today, not tomorrow.***

”

— Robert Kiyosaki



THANK YOU

All slides will be emailed to families in the October IB Newsletter

Please message cpross@sd44.ca with any questions or concerns.