

Artificial Intelligence  
and  
Critical Thinking  
in the North Vancouver School District



1

So... what are  
we talking  
about?

**Artificial Intelligence (AI):** AI is described as a digital tool that utilizes data to learn, solve problems, and make decisions—tasks typically associated with human capabilities.

**Critical Thinking:** This competency involves making judgments based on reasoning. Students consider various options, analyze them using specific criteria, and draw conclusions. It encompasses a set of abilities that students use to examine their own thinking, as well as that of others, regarding information received through observation, experience, and various forms of communication.

2

## Context of AI in BC



### Ministry of Education

Ministry has published documents on considerations for using AI tools in K-12 schools.



### School Districts

Establishing local guidelines for use in schools.  
Incorporating technological resources.



### Classrooms

Using AI to promote digital literacy and personalize teaching and learning.

3

The Educated Citizen



Live a Good Life  
Make a Good Living

### Goals of Public Schooling

Intellectual Development



Human and Social Development



Career Development



### School District Priorities

Student-Centred Education

Innovative Instruction

Welcoming and Inclusive Culture

Mental Health and Well-Being

Truth, Healing and Reconciliation

Environmental Stewardship

4



## Guiding Beliefs

### Ethical Use of AI

Enhances education without replacing human interaction or creativity.

### Equity and Accessibility

AI tools should be developmentally appropriate and accessible to all students.

### Human-Centered Approach

Teachers can use AI as a supportive resource/tool.

5

## How are NVSD Educators Viewing the Adoption of AI?

NOT USING IT AT ALL

UTILIZING IT IN THEIR NON-PROFESSIONAL LIVES

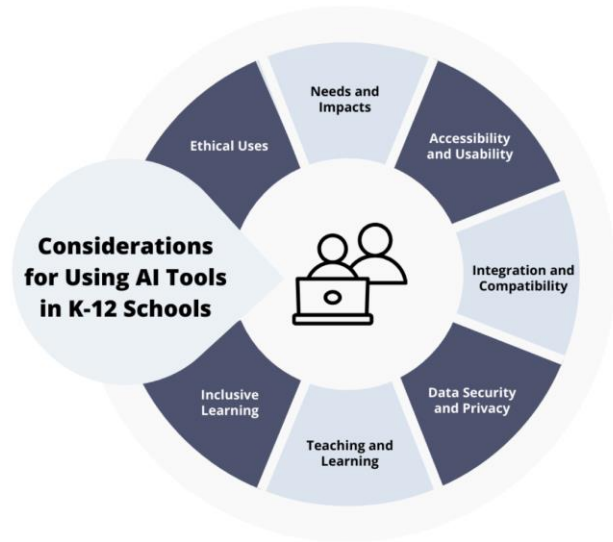
INCORPORATING IT INTO THEIR PROFESSIONAL WORK

USING IT WITH STUDENTS

HAVING STUDENTS CREATE IN IT INDEPENDENTLY

6

What does  
the  
responsible  
integration  
of AI look  
like?



7

## Possible Challenges of AI

Academic  
Integrity

Bias &  
Discrimination

Dependence  
on Technology

Data Privacy &  
Security

Promoting  
Ethical Use

8



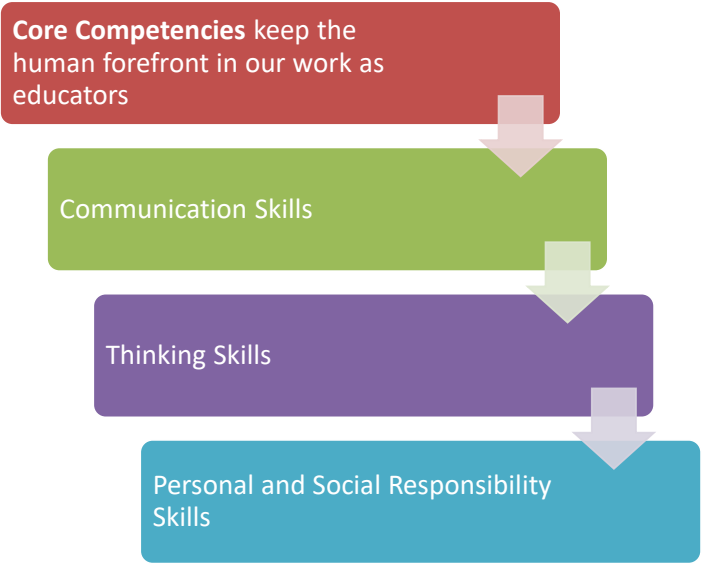

# Opportunities for AI in the Classroom

- Personalized Learning
- Efficiency in Planning & Preparation
- Gained Instructional Time
- Data-Driven Insights
- Enhanced Collaboration




9

## Curricular Connections



- Core Competencies keep the human forefront in our work as educators
- Communication Skills
- Thinking Skills
- Personal and Social Responsibility Skills

10



## Next Steps

- Liaise at a provincial, national and international level on best practice
- Explore AI tools
- Develop the NVSD Guiding Beliefs document
- Complete Staff Tool Kit
- Support community members in their AI understanding

11

## Questions



12