

# Lucas Centre Community Workshop

## *North Vancouver School District*

### *Land Management Process*



Land, Learning and Livability

# Welcome!

A group of people are gathered around a table in a meeting. In the foreground, a man with glasses and a bright green jacket is smiling. Next to him, a woman in a blue top and a dark cap is gesturing with her hand. In the background, other people are visible, some looking at documents on the table. The scene is brightly lit, suggesting an indoor setting like a community center or office.

## Why are we here?

- To share information on the project
- To listen to you
- To offer the opportunity for you to share and hear from one another

# AGENDA FOR TODAY

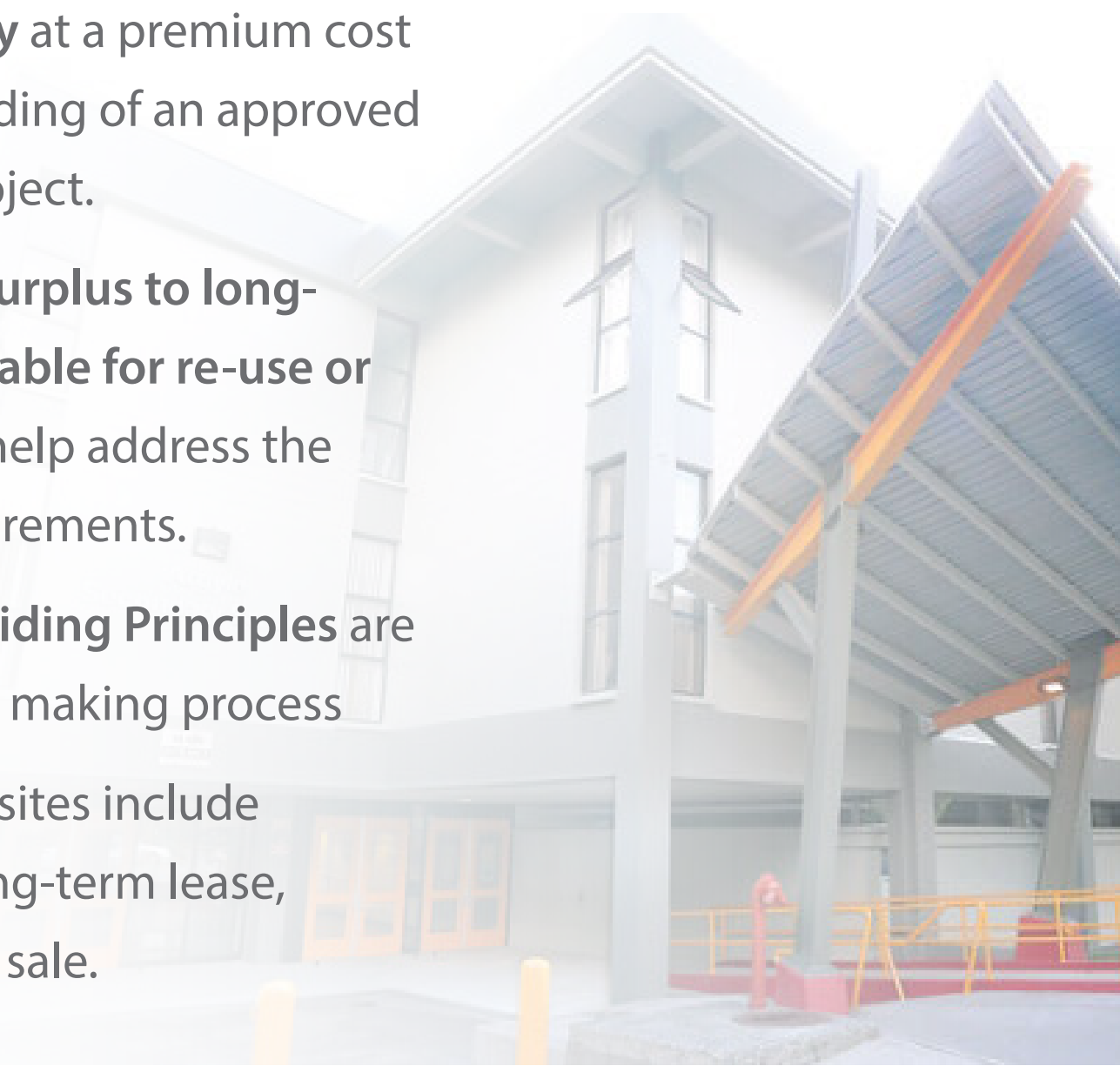
1. Project Background
2. Planning Process and What We've Heard So Far
3. The Site Today
4. Looking Ahead
5. **GROUP DISCUSSION: HEARING FROM YOU**



# Board of Education Background

- **Board's mandate** is to provide quality educational programs, services, and resources to students, including modern facilities
- **Board must contribute partial, or fully fund capital projects** (partial for Sutherland and Westview; Heritage premium for Ridgeway and Queen Mary; full funding of the Education Services Centre on Lonsdale).

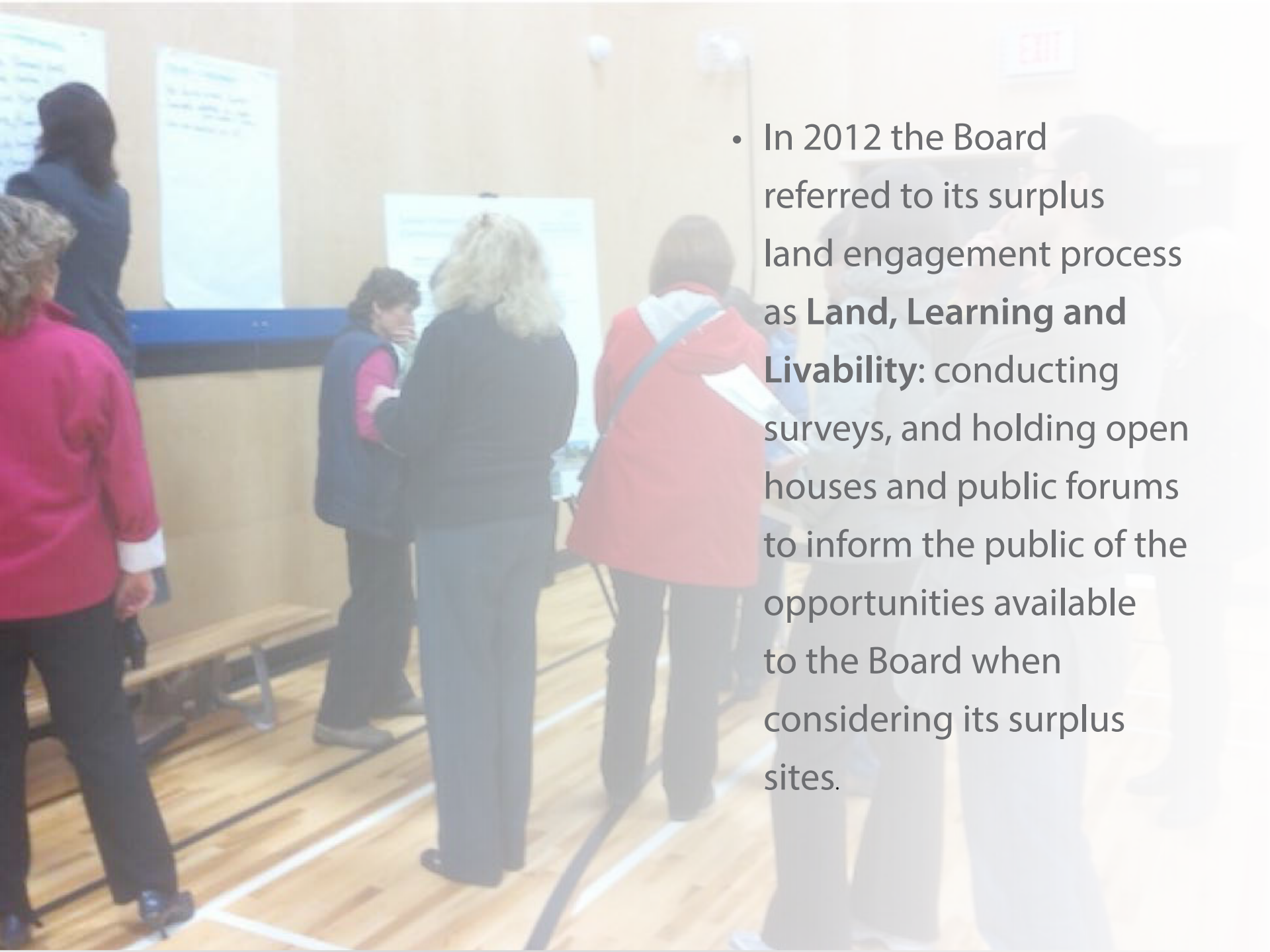
- **Board is pursuing the full replacement of Argyle Secondary** at a premium cost of \$9M over the funding of an approved seismic upgrade project.
- **Sites identified as surplus to long-term need are available for re-use or redevelopment** to help address the Board's capital requirements.
- The Board's **L L L Guiding Principles** are used in the decision making process
- **Options** for surplus sites include short-term lease, long-term lease, redevelopment and sale.



# Commitment to Consultation



- Active community consultation has been ongoing since 2003: *Community Input on Changes to our Schools; Protecting Quality Education*
- **Community Forums** held on an Annual basis (Budget Challenge 2010 and Restructuring 2010), as well as numerous local public meetings related to potential school closures.



- In 2012 the Board referred to its surplus land engagement process as **Land, Learning and Livability**: conducting surveys, and holding open houses and public forums to inform the public of the opportunities available to the Board when considering its surplus sites.

# Capital Improvements

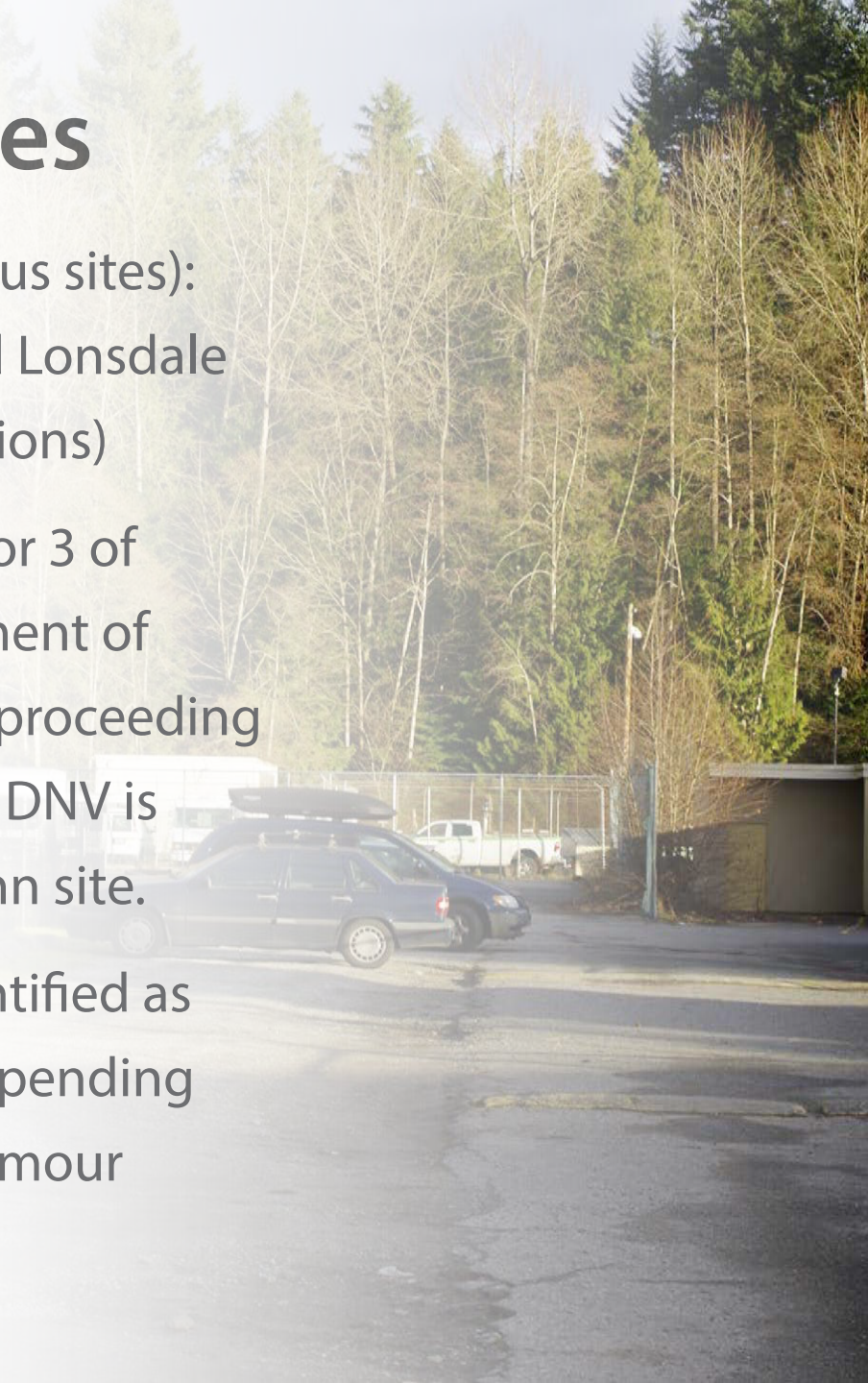
A modern school building with white and red corrugated metal siding and large windows. The building is multi-storied and features a prominent red vertical stripe on the right side. The foreground shows a concrete walkway and a low concrete wall.

- At the same time that the Board has been discussing its surplus sites, it has also completed an impressive number of capital projects involving school expansions and replacement of outdated buildings with new, modern, energy efficient schools able to accommodate a larger number of students.
- Since 2004, new and replacement schools with a combined value of \$133M have been built:
  - Lynn Valley (\$4.5M), Westview (\$8.5M), Sutherland (\$29M), Highlands (\$13M), Ridgeway (\$21M), Carson Graham (\$37M), and Queen Mary (\$20M).



# Status of Surplus Sites

- Lease Agreements (5 of the 11 surplus sites):  
Fromme, Maplewood, Westover and Lonsdale Creek Annex, Plymouth (in negotiations)
- Purchase and Sales Agreements: (2 or 3 of the 11 surplus sites) the redevelopment of Ridgeway Annex and Monterey are proceeding through the Municipal process, and DNV is interested in acquiring the Keith Lynn site.
- Blueridge Elementary has been identified as a surplus site, with its availability depending upon the future replacement of Seymour Heights Elementary.



- In 2013, the Board identified the need for a Land Management Planning consultant team to lead the process for the future of the Cloverley and Lucas sites. DIALOG was selected from among a number of qualified groups to work with the School District and to lead the community engagement process, starting in 2014, which brings us to this evening.



# Planning Process & Getting Involved

1

## Understanding Neighbourhood Priorities

*January - February 2014*

- Community Workshops & Public Open House
- Site and Feasibility Analyses



# Planning Process & Getting Involved

2

## Exploring Options

*March - April 2014*

- Community Workshops & Public Open House
- Ongoing Feasibility Analyses



# Planning Process & Getting Involved

3

## Reviewing the Preferred Option

*May - June 2014*

- Survey and Ongoing Updates (e.g. LLL blog)
- Final Analyses



Registration | MyMail | Portal

Search

HOME SCHOOLS ▾ PROGRAMS & SERVICES ▾ BOARD OF EDUCATION ▾ DISTRICT ▾ CONTACT US ▾

Board of Education

Board Members

Committees & Assignments

Vision, Values & Goals

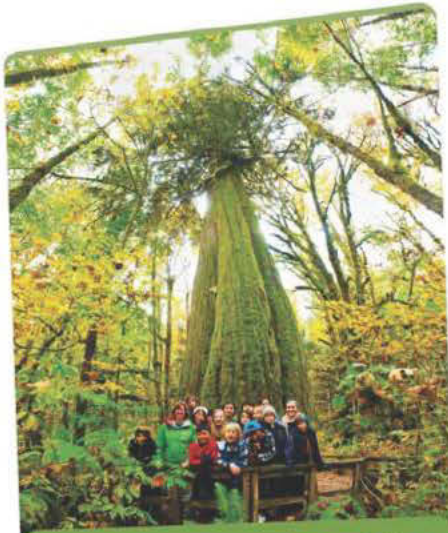
Strategic Plan

North Vancouver School District > Board of Education > Land, Learning & Livability

## Land, Learning and Livability

This is a time of unprecedented renewal and revitalization in the North Vancouver School District. With all the change and opportunities before us, the Board of Education has decisions to make, and engaging with the community is a priority in this process.

  
North Vancouver  
School District  
the natural place to learn®



Land, Learning and Livability  
Community Consultation  
UPDATE

October 2013

# What We've Heard

## Top Concerns:

- Too many condos
- Traffic issues
- Loss of facilities

## Top Ideas & Opportunities:

- Community amenities
- Elder/senior care

# How will we use your input?

- In shaping options for the future of the Lucas site, we will consider your priorities and ideas as best as possible, and in balance with other considerations such as the NVSD's Guiding Principles, CNV policies, and financial feasibility.
- We will continue to communicate the process and provide feedback on how public input has been integrated.



# The Lucas Site Today





# Existing Site Conditions



## LEGEND

-  Site
-  Forest Character Open Space Parks
-  Parks
-  Site Existing Vegetation
-  Site Existing Building

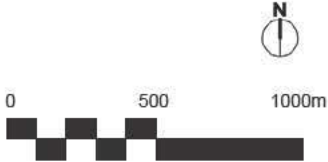


# Parks and Open Space - Community



## LEGEND









-  Site
-  Forest Character Open Space Parks
-  Parks
-  Schools  
(source: North Vancouver School District Map)
-  Major Trails  
(source: City of North Vancouver)
-  Minor / Informal Trail  
(source: City of North Vancouver)
-  Spirit Trail  
(source: City of North Vancouver Spirit Trail Map)



# Parks and Open Space - Neighbourhood

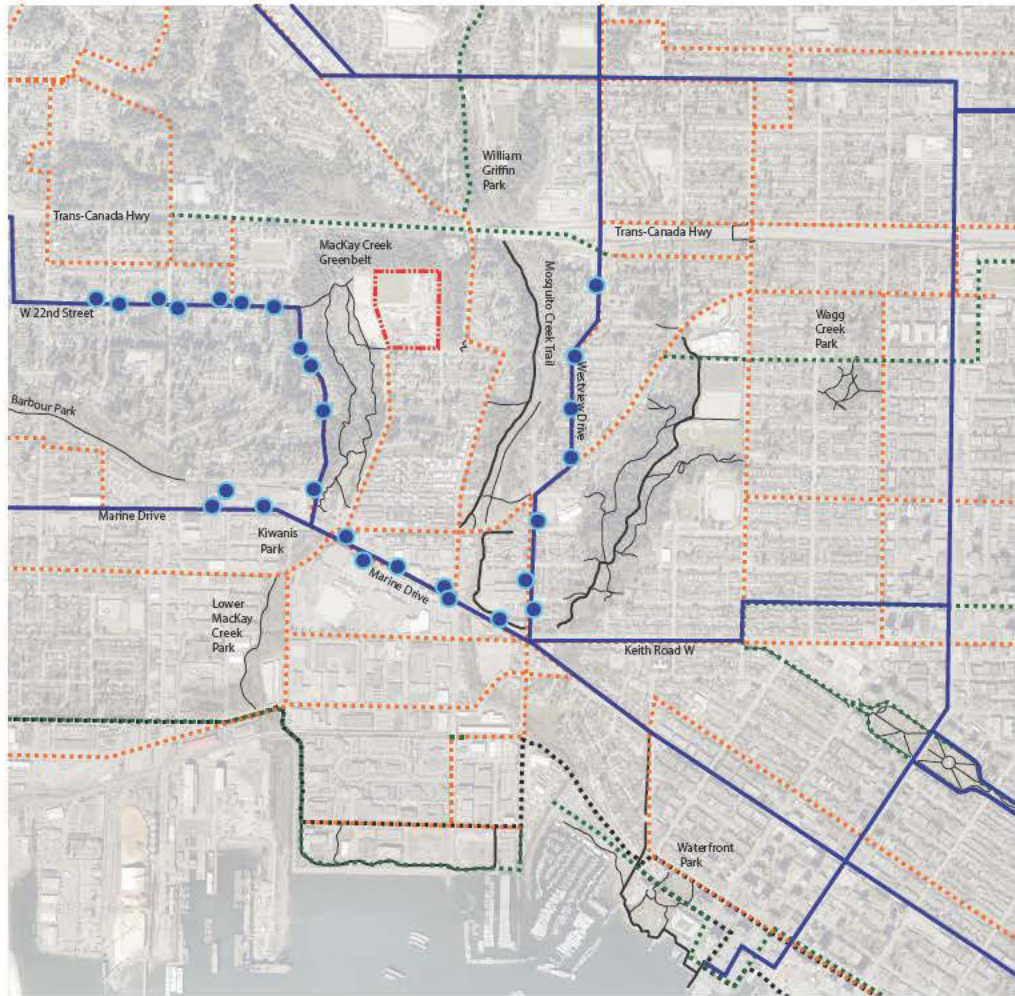


## LEGEND

-  Site
-  Forest Character Open Space Parks
-  Parks
-  Schools  
(source: North Vancouver School District Map)
-  Major Trails  
(source: City of North Vancouver)
-  Minor / Informal Trail  
(source: City of North Vancouver)
-  Site Existing Vegetation
-  Site Existing Building

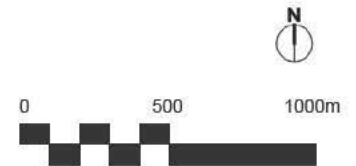


# Transportation Network - Community

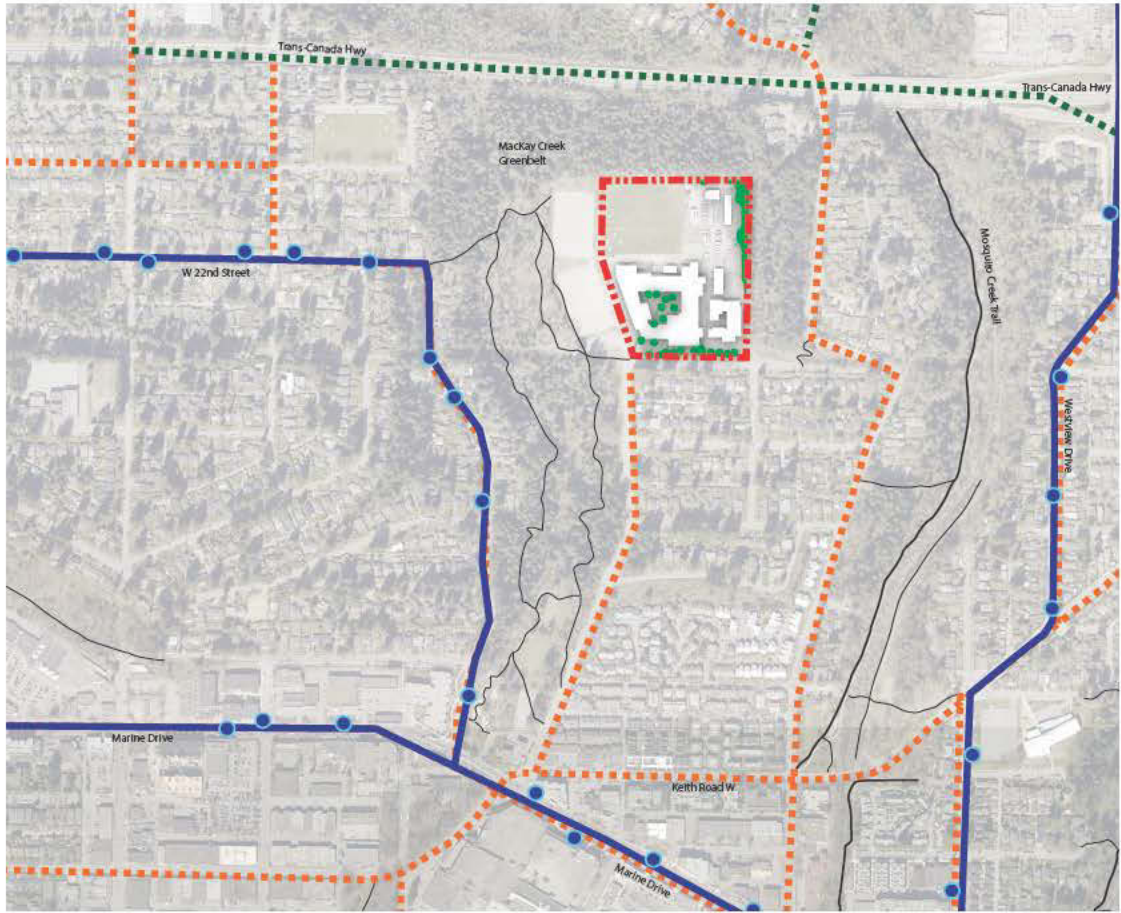


## LEGEND

-  Site
-  Bus Line  
(source:Translink)
-  Bus Stop  
(Walking Distance)
-  Major Trails  
(source: City of North Vancouver)
-  Minor / Informal Trail  
(source: City of North Vancouver)
-  Spirit Trail  
(source: City of North Vancouver Spirit Trail Map)
-  On-Street Bike Route  
(source:City of North Vancouver 2012 Bicycle Master Plan)
-  Off-Street Bike Route  
(source:City of North Vancouver 2012 Bicycle Master Plan)



# Transportation Network - Neighbourhood

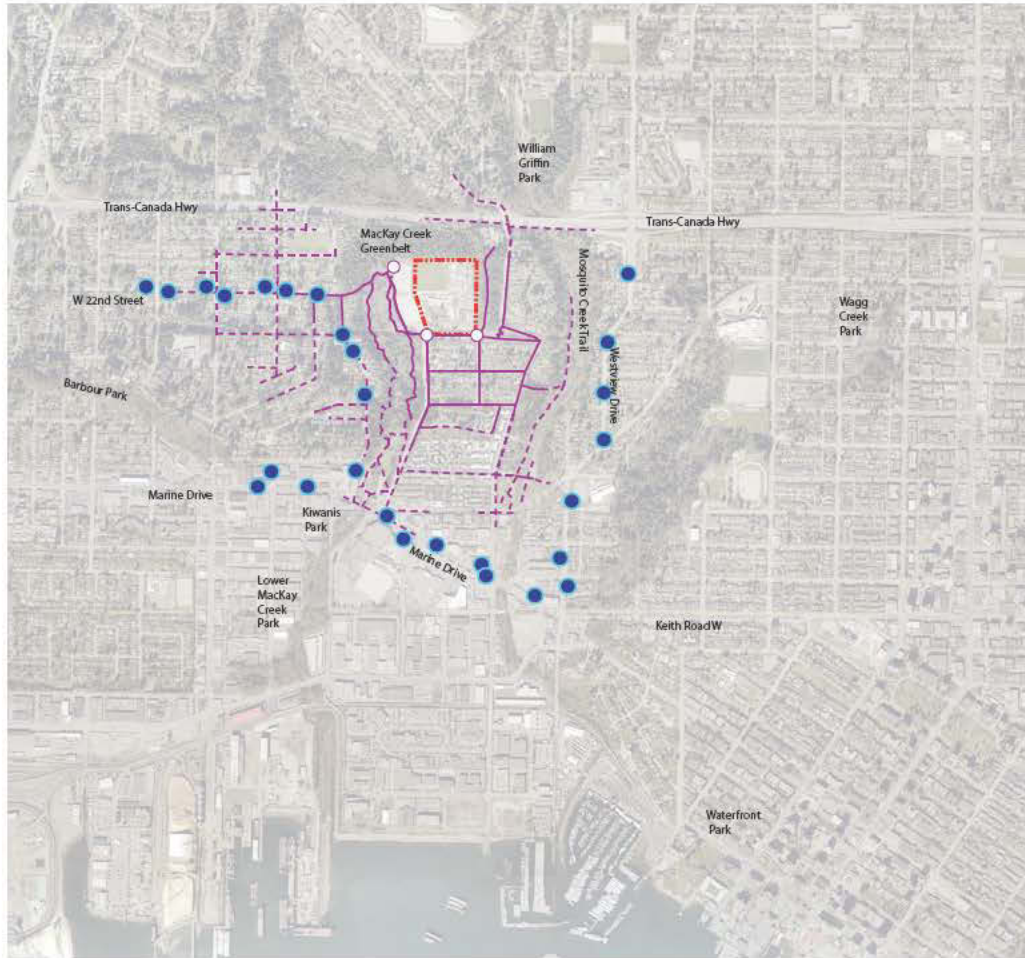


## LEGEND

-  Site
-  Bus Line  
(source:Translink)
-  Bus Stop  
(Walking Distance)
-  Major Trails  
(source: City of North Vancouver)
-  Minor / Informal Trail  
(source: City of North Vancouver)
-  Spirit Trail  
(source: City of North Vancouver Spirit Trail Map)
-  On-Street Bike Route  
(source:City of North Vancouver 2012 Bicycle Master Plan)
-  Off-Street Bike Route  
(source:City of North Vancouver 2012 Bicycle Master Plan)
-  Site Existing Vegetation
-  Site Existing Building

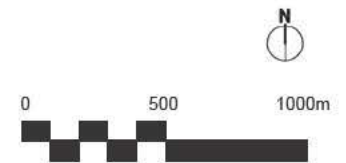


# 5-10 Minute Walking Distances - Community



## LEGEND

-  Site
-  5 Minute Walking Distance (400m)
-  10 Minute Walking Distance (800m)
-  Walking Distance Start Point
-  Bus Stop (Walking Distance to Site)



# 5-10 Minute Walking Distances - Neighbourhood



## LEGEND

-  Site
-  5 Minute Walking Distance (400m)
-  10 Minute Walking Distance (800m)
-  Walking Distance Start Point
-  Bus Stop (Walking Distance to Site)
-  Site Existing Vegetation
-  Site Existing Building

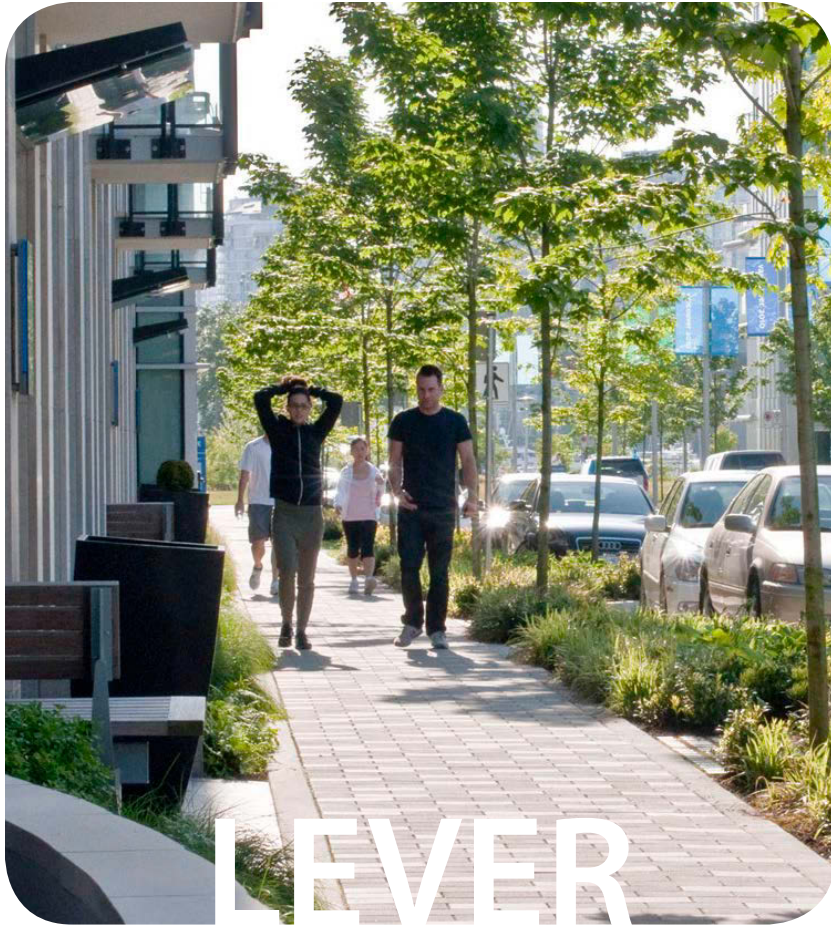


# Existing Traffic Conditions





# Looking ahead to tomorrow...



LEVER

for learning



PLACE

for learning

# GROUP DISCUSSION: HEARING FROM YOU

1. What are some of the **important issues that should be considered** for the future of the Lucas site? What, if any, are your concerns? *(15 minutes)*
2. What are some of the **greatest opportunities that could be considered** for the future of the Lucas site, considering what we know about it being both a lever and a place for learning? *(30 minutes)*

An aerial photograph of a school campus. In the center, there is a large white tent-like structure and a green field. To the left, there are residential-style buildings. To the right, there is a road with a bridge. The background is a dense forest.

# Thank you!

**Next Steps:**

Public Open House - February 2014

Next round of Community Workshops - Early April 2014

[www.sd44.ca/Board/LandLearningLivability](http://www.sd44.ca/Board/LandLearningLivability)

**Land, Learning and Livability**